

# Fine Wine

— AUCTION —



29  
YEARS

**THURSDAY, NOVEMBER 7, 2019**

CIBC - COMMERCE COURT WEST, 199 BAY STREET, 56<sup>TH</sup> FLOOR



Lot 83A/83B



## 29th Annual TSO Fine Wine Auction

A PROJECT OF THE TORONTO SYMPHONY VOLUNTEER COMMITTEE

### TSO FINE WINE AUCTION

**Thursday, November 7, 2019**

CIBC – Commerce Court West, 199 Bay Street, 56th Floor, Toronto

Reception: 5:30 p.m.

Auction: 6:15 p.m. for 6:30 p.m. start

For more information and to register, please visit

TSVC.CA/Fine-Wine-Auction or call 416-593-7769 x359

### ALL INQUIRIES AND ABSENTEE BIDS SHOULD BE ADDRESSED TO:

**Toronto Symphony Volunteer Committee**

Attn: Linda McGeown

500-145 Wellington St. W.

Toronto, Ontario, Canada M5J 1H8

416-593-7769 x359

lmcgeown@tso.ca

### AUCTIONEER

Stephen Ranger

### WINE APPRAISER & CONSULTANT

Robert Jull, Vinifera Wine Services

### INVENTORY MANAGEMENT

Warren Porter and Irina Omari,

Iron Gate – Private Wine Management

### WE THANK OUR SPONSORS

CIBC for their outstanding generosity as sponsor of the Fine Wine Auction evening.



Martell for generously providing the cognac cocktails for the event.



Please enjoy our products responsibly.



Jack and Debra Walker for providing the reception wines.



  
**MARTELL**  
COGNAC  
FONDÉE  EN 1715



MARTELL® BLUE SWIFT  
DISCOVER INFINITE SMOOTHNESS  
VISIT [MARTELL.COM](http://MARTELL.COM) TO LEARN MORE  
Please enjoy our products responsibly.

## Table of Contents

### Messages from the...

TSO Interim Artistic Director .....	4
TSO Chief Executive Officer .....	4
TSVC President .....	5
TSO Fine Wine Auction Co-Chairs .....	6
Auctioneer Stephen Ranger .....	6
Appraiser and Consultant Robert Jull .....	6
Introduction to the Auction Directory .....	7
Wine Donors .....	7
Fine Wine Auction Lots .....	8
Australia .....	9
Canada .....	13
Chile .....	15
France	
Alsace .....	15
Armagnac .....	16
Bandol/Banyuls .....	16
Bordeaux .....	16
Burgundy .....	37
Champagne .....	39
Cognac .....	40
Languedoc .....	40
Loire Valley .....	40
Rhône Valley .....	40
Germany .....	44
Hungary .....	45
Italy .....	45
Portugal .....	51
Whisky .....	51
South Africa .....	52
Spain .....	52
United States .....	53
Fine Wine Auction Volunteer Committee .....	59
Bidding Procedure and Collecting Your Wine .....	60
Absentee Bid Form .....	61
Absentee Bid Order Form .....	62
Terms and Conditions of Sale .....	63
Level/Ullage Description and Interpretations .....	64





## A Message from the Interim Artistic Director Toronto Symphony Orchestra



A very warm welcome to the 29th annual Fine Wine Auction, presented by the Toronto Symphony Volunteer Committee! I hope you'll join me in raising a glass to this remarkable group of volunteers, who selflessly give their time to organize many wonderful fundraising events each year. They are truly a source of inspiration to the musicians of the TSO. The Committee's work, and your support tonight, allow the Orchestra to reach new musical heights and help our educational programs to thrive. So thank you for being with us this evening—be merry, and please bid generously!

*Sincerely,*

**Sir Andrew Davis**

Interim Artistic Director

Toronto Symphony Orchestra

## A Message from the Chief Executive Officer Toronto Symphony Orchestra



Welcome to the 2019 Fine Wine Auction, presented by the Toronto Symphony Volunteer Committee. Each year, generous donors and dedicated volunteers join forces to offer this unique and delicious event—the Committee's main annual fundraising initiative. Through your presence here tonight, and with your kind contribution, you are actively supporting the TSO's educational activities, community engagement endeavours, and its tradition of delivering exceptional musical experiences to Toronto audiences. I raise my glass to the entire Toronto Symphony Volunteer Committee, with special thanks for the Fine Wine Auction Committee for their amazing work and ongoing enthusiasm.

With many thanks, and cheers!

*Sincerely,*

**Matthew Loden**

Chief Executive Officer

Toronto Symphony Orchestra

## A Message from the President



This catalogue presents another remarkable collection of fine wines for auction. They have come from the cellars of our generous donors. They wait to be purchased by you, our discriminating buyers.

Each bottle will either find a new home, or will be talked about, uncorked, and then appreciated as the centrepiece of some special celebration. Envisioning either of these results, the Volunteer Committee proudly presents the 29th Toronto Symphony Orchestra Fine Wine Auction. We welcome you to another exciting (and informative!) evening of bidding and buying.

As I mentioned in this message last year, between the donation of wine and the purchase at auction, we have the special attentions of a group of our city's finest wine experts – Robert Jull for appraisal and consulting, Iron Gate Private Wine Management for careful storage and lotting, Patrick Lucero for this attractive catalogue, and the incomparable expertise of wine auctioneer Stephen Ranger of Waddington's for super salesmanship. Thank you all.

And this evening, we all find ourselves in this comfortable setting provided by long-time friend of the Wine Auction and our most generous host, CIBC. Our sincere thanks for this incredible support that has been such a critical part of the Auction for the last many years.

The Volunteer Committee Wine Auction Team co-chairs Frank Au and Mary Shannon have spent a year putting it all together. We thank them for their leadership, and for making every effort to keep expenses low so that all TSVC Members who work on this project can be assured that the maximum financial return is available for our support of our TSO. Linda McGeown oversees all things *vino* from our TSVC Office, and she is the heart-and-soul of this project. Thank you all.

The Volunteer Committee exists solely to support the Toronto Symphony Orchestra. All of our projects, as outlined on our website, <https://TSVC.CA>, are geared to fundraising or helping with educational projects such as the Toronto Symphony Youth Orchestra. We are committed to doing our part to ensure the continued excellence of the TSO, and we welcome your participation in, and/or financial donations to, any of our events.

Many thanks for being part of the 2019 TSO Fine Wine Auction!

Sincerely,

**Andrea Alexander**

President

Toronto Symphony Volunteer Committee

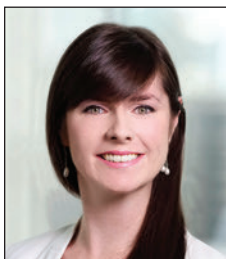
## A Message from the TSO Fine Wine Auction Co-Chairs



As co-chairs of the TSO Fine Wine Auction Committee, it is with excitement and gratitude that we welcome the 29th year of the Fine Wine Auction event. Excitement with the prospect of another successful event in support of the Toronto Symphony Orchestra and the Toronto Symphony Youth Orchestra, and gratitude to those who have helped us get here.

Firstly to Thao Nguyen and Liz Nichol, our previous chairs who continue to remain integral to the event's success. Also, a great deal of that success is due to our dedicated committee members – this night would not be possible without them. Sincere gratitude to Linda McGeown for her essential role in managing this annual fundraiser so diligently in addition to CIBC for their continued generosity in hosting this event.

Finally, special thanks to our donors for their great generosity and loyalty to the cause. Enjoy the evening!



**Frank Au**  
Co-Chair  
TSO Fine Wine Auction

**Mary Shannon**  
Co-Chair  
TSO Fine Wine Auction

## Auctioneer



Stephen Ranger has been involved in the auction and fine art business for 28 years, and is Vice President and partner in Canada's oldest and most prestigious auction house, Waddington's. Among his many accomplishments is the establishment of the first commercial wine auction in Canada in partnership

with the LCBO, and a partnership with Sotheby's Canada for the sale of Important Canadian Art, realizing sales over \$100 million.

In 2011, Stephen launched "Concrete Contemporary Auctions and Projects" creating the first dedicated sales focusing on the creation of a secondary market for important Canadian contemporary art.

Social good is an important part of Stephen's business philosophy. Each year he lends his expertise to over twenty-five non-profit and philanthropic organizations across Canada raising over \$3 million annually in fundraising events.

**Stephen Ranger**  
Auctioneer

## Appraiser & Consultant



Robert Jull has been a passionate collector, importer and appraiser of fine wines for over 30 years. In 1988, Rob established Vinifera Wine Services and imports exceptional French and Italian wines from a wide variety of elite producers. Rob regularly travels to Europe to meet and taste with current and potential

suppliers. Since 1990, Rob's expertise has benefitted the Toronto Symphony's Fine Wine Auction thanks to his role as wine appraiser and consultant.

In addition, Rob prepares appraisals (including assessment of perils and tasting) for insurance and property disputes. Rob has extensive international purchasing and selling experience at auction, wholesale, and retail levels.

**Robert Jull**  
Wine Appraiser & Consultant  
Vinifera Wine Services



# Introduction to the Auction Directory

## CAVEAT

While every effort has been made to ensure the accuracy of the information about the wines in this catalogue, errors and omissions may occur. The Toronto Symphony Orchestra and the Toronto Symphony Volunteer Committee cannot be held liable if purchased wines do not fit the description contained herein.

## ORGANIZATION

This catalogue has been organized according to wine-growing regions. There are many vertical and horizontal groupings to enhance selection and comparability. The auction will be conducted in catalogue order.

## WINE INSPECTION AND CONDITION NOTES

As in previous years, all bottles from older vintages have been inspected. Where in any case considerations regarding the label, bottle condition, or the fill level are deemed to have a potential effect on the value or quality of the wine, particulars of that condition have been indicated. As is customary, somewhat greater ullage in older vintages is considered acceptable, provided that no leakage is evident, with no comment necessary.

## WINE REVIEWS AND RATING

For wine reviews, we have relied on the professional wine reviews of Robert Parker of the Wine Advocate and Vinous Media, whose numerical reviews are standards of reference for international wine enthusiasts. Wherever possible, the most recent review for a wine has been used.

## Wine Donors

IN APPRECIATION

We gratefully acknowledge the wine donations and generous support of our wine donors, without whom it would not be possible to hold our 2019 Fine Wine Auction in support of the Toronto Symphony Orchestra (TSO). We appreciate your positive response and thank you all.

### CELLAR

(\$75,000 to \$200,000)

Alfred G. Wirth

### METHUSELAHS

(\$40,000 to \$74,999)

Anonymous (3)

### IMPERIALS

(\$20,000 to \$39,999)

Larry Dare

Robert Gale

Rahul Suri

Barbara Switzer, *in memory*

*of W. John Switzer*

Anonymous (2)

### JEROBOAMS

(\$5,000 to \$19,999)

Joni Boyer, *in memory*  
*of Dr. S.O. Kjellberg*

John H. Brown

Charles (Chuck) Byers

John and Julia Campbell

Gary Craig

Ruth Farrow, *in memory*  
*of Dr. Grant Farrow*

Stephen Sandler

Gerald M. Soloway

Anonymous (6)

### MAGNUMS

(up to \$4,999)

Peter Fitting

Joyce Gutmann

Gabrielle Israelievitch

Elliott Rosenberg

Robert Stewart

Hunter Thompson

Dean Tudor

Anonymous (3)

*List complete at time of printing.*

Lot 61

# Fine Wine

## A U C T I O N L O T S



## Australia

- 1**     **E&E 1992** (1)  
Barossa Valley Black Pepper  
Shiraz  
**ELDERTON 2002** (3)  
Command  
Shiraz  
**GRANT BURGE 2004** (1 mag.)  
Barossa  
Shiraz  
**GRANT BURGE 2008** (3)  
Barossa  
Shiraz
- 7 BTS. & 1 MAG.     *Estimate* \$926 – \$1,544

- 2**     **LANGMEIL 2003** (3)  
The Freedom 1843  
Shiraz  
**PENFOLDS 1990** (1)  
Bin 707  
Cabernet Sauvignon  
**PETER LEHMANN 1992** (1)  
Barossa  
Shiraz
- 5 BTS.     *Estimate* \$1,042 – \$1,736

- 3**     **LODGE HILL 2008** (1)  
Lodge Hill  
Shiraz  
**PENFOLDS 1992** (1)  
Bin 128 Coonawarra  
Shiraz  
**CAPE MENTELLE 2002** (1)  
Zinfandel  
**D'ARENBERG 2005** (1 mag.)  
D'Arry Original  
Red Blend  
**LEEWIN ESTATE 2010** (5)  
Art Series  
Cabernet Sauvignon
- 8 BTS. & 1 MAG.     *Estimate* \$778 – \$1,296

- 4**     **HAMILTON 1997** (2)  
Gumper's Block  
Shiraz  
**HASELGROVE 1997** (2)  
Shiraz  
**HOUGHTON 1994** (2)  
Gold Reserve  
Shiraz  
**PARINGA ESTATE 2007** (1)  
Estate  
Shiraz  
**HARDY'S 1996** (1)  
Bankside  
Shiraz
- 8 BTS.     *Estimate* \$451 – \$752



**5** **PENFOLDS 1999** (1)

Bin 407

Cabernet Sauvignon

**PENFOLDS 2000** (1)

Bin 407

Cabernet Sauvignon

**PENFOLDS 2010** (1)

Bin 407

Cabernet Sauvignon

RP = 90; Deep garnet-purple colored, the 2010 Bin 407 Cabernet Sauvignon offers up pure creme de cassis and blackberry preserve aromas accented by lovely menthol, carob and espresso notes plus a hint of marmite. Very tightly structured with a great backbone of medium-firm, very fine tannins, it remains rich and muscular with nice acid freshness through the long finish.

**PENFOLDS 1991** (3)

Bin 407

Cabernet Sauvignon

Stained Label

**PENFOLDS 1998** (1)

Bin 707

Cabernet Sauvignon

RP = 90; The outstanding 1998 Cabernet Sauvignon Bin 707 is a thick, rich, full-bodied Cabernet emphasizing copious quantities of cassis fruit. Pure, with nicely integrated oak, acidity, and tannin, it cuts a broad swath across the palate. While still young and grapy, this 1998 is loaded with potential.

7 BTS.

*Estimate* \$1,325 – \$2,209

**6** **PENFOLDS 1981** (1)

Grange

Shiraz

RP = 97; The 1981 stood out as slightly superior. Winemaker John Duval always felt this was a tannic style of Grange, but the wine has shed its tannins, and this is one of the few vintages where the percentage of Cabernet Sauvignon was above 10%. Sweet notes of creme de cassis, cedarwood, charcoal, and barbecue spices are followed by a full-bodied, opulent wine displaying heady amounts of alcohol, glycerin, and density in its full-bodied, skyscraper-like texture. I was drinking this wine with great pleasure in the mid-nineties, yet here it is nearly 15 years later, and the wine does not appear to have budged much from its evolutionary state. This is a testament to how remarkably well these wines hold up, and age at such a glacial pace.

**PENFOLDS 1982** (1)

Grange

Shiraz

VTs

RP = 97; The 1982 is another superb example of that. One of the jammiest, most precocious Granges when it was released, it has never gone through a closed stage and continues to drink beautifully. A full-bodied, opulent Grange, it reveals an inky/purple color to the rim as well as a beautiful nose of crushed blueberries, blackberries, smoke, toast, roasted herbs, and road tar. This dense, plush, expansive, seamless, seductive 1982 has not changed much since I had it nearly a decade ago.

2 BTS.

*Estimate* \$1,597 – \$2,661



## 7 **PENFOLDS 1986** (1)

Grange  
Red Blend

RP = 98+; One of my favorite wines from Penfolds, the 1986 (a blend of 87% Shiraz and 13% Cabernet Sauvignon) is one of the most powerful Granges produced (14+% alcohol). At age 23, it reminds me of the way it tasted around 9 years of age. Inky/purple to the rim with an extraordinary perfume of sweet licorice, crushed pepper, blackberry liqueur, camphor, and barbecue spices, this sensationally full-bodied, concentrated, layered 1986 is still an infant in terms of its ultimate potential. It is remarkable how this wine has aged, and it's hard to believe how certain wine geeks will subscribe to the aging ability of the Grange, but don't believe the same is true for other old vine Shiraz wines from the Barossa and McLaren Vale. It just doesn't make any sense. The 1986 is one of the greatest Granges for my palate.

## **PENFOLDS 1988** (1)

Grange  
Red Blend

RP = 91; A blend of 94% Shiraz and 6% Cabernet Sauvignon, this was considered to be "an uncharacteristically soft, fruity Grange." Everyone at the tasting agreed with those comments. This wine shows a syrupy creme de cassis, earthy note, some pepper, and caramel. It is somewhat soft and accessible for such a relatively young Grange, but there is plenty of structure and tannin in the finish. It is certainly perfumed and more evolved than some of its siblings that are actually older, chronologically speaking. This wine has sweet, full-bodied, plum, cherry, and cassis flavors, with some distinct truffle and asphalt notes.

2 BTS. *Estimate \$1,816 – \$3,027*

## 8 **PENFOLDS 2001** (2)

Grange  
Shiraz

RP = 98+; It is always a treat to taste Australia's most famous wine, Penfolds' Grange cuvee (the word Hermitage has been dropped because of legal issues). The 2001 Grange is one of the few vintages of this cuvee to be composed of 100% Shiraz (the others being 1951, 1952, 1963, 1999, and 2000). Aged 17 months in 100% American oak, and tipping the scales at 14.5% alcohol, the 2001 is undeniably one of the top examples of this wine. At this stage, it appears to eclipse the 1998 and 1996. Inky/blue/purple to the rim, with a stunning perfume of blueberries, blackberries, chocolate, graphite, and earth, it boasts good acidity, huge tannins, magnificent concentration, and a multilayered, textured mouthfeel. It is a big, but impeccably well-balanced Shiraz that should shed some of its structure and tannin over the next 4-5 years.

2 BTS.

*Estimate \$1,639 – \$2,732*



- 9**      **PENFOLDS 1997** (3)  
 Koonunga Hill  
 Red Blend  
**ROSEMOUNT ESTATE 1994** (2)  
 Estate  
 Cabernet Sauvignon  
**ROSEMOUNT ESTATE 1995** (3)  
 Estate  
 Shiraz  
**ROSEMOUNT ESTATE 1996** (2)  
 Estate  
 Shiraz  
**SALTRAM 1988** (1)  
 Pinnacle Coonawarra  
 Cabernet Sauvignon  
**WOLF BLASS 1995** (1)  
 Premium Selection  
 Cabernet Sauvignon  
**BLACK OPAL 1995** (1)  
 Cabernet Sauvignon  
**HARDY'S 1997** (1)  
 Nottage Hill  
 Shiraz
- 14 BTS.                      *Estimate* \$573 – \$955

- 10**      **MOUNT LANGI GHIRAN 1996** (3)  
 Shiraz
- 3 BTS.                      *Estimate* \$268 – \$447

## Canada

- 11**      **OSOYOOS LAROSE 2003** (1)  
 Le Grand Vin  
**13TH STREET WINE CORP 1998** (1)  
 Cuvée Temkin-Paskus  
 Chardonnay  
**CROWN BENCH ESTATE 2001** (1)  
 Beamsville  
 Chardonnay  
**CUVEE TEMKIN-PASKUS 1998** (1)  
 Chardonnay  
**DANIEL LENKO 2004** (1 hf. bt.)  
 Harvest Vidal  
**DANIEL LENKO 2004** (1)  
 Red Blend  
**DANIEL LENKO 2004** (2)  
 Old Vines Merlot  
**DANIEL LENKO 2004** (1)  
 Signature Chardonnay  
**DANIEL LENKO 2004** (1)  
 Syrah  
**HARVEST ESTATE 2000** (2 hf. bts.)  
 Select Late Harvest Vidal  
**HERNDER 2001** (1 hf. bt.)  
 Late Harvest Chardonnay
- 4 HF. BTS. & 9 BTS.      *Estimate* \$476 – \$793

**12**     **HIDDEN BENCH 2005** (2)

Chardonnay

**HIDDEN BENCH 2006** (1)

Chardonnay

**HIDDEN BENCH 2008** (1)

Chardonnay

**HIDDEN BENCH 2009** (1)

Chardonnay

**HIDDEN BENCH 2010** (1)

Chardonnay

**HIDDEN BENCH 2005** (1)

Estate Bottled

Pinot Noir

**HIDDEN BENCH 2007** (2)

Felseck Vineyard

Chardonnay

**HIDDEN BENCH 2009** (3)

Felseck Vineyard

Pinot Noir

**HIDDEN BENCH 2006** (3)

Hidden Bench

Syrah/Malbec

15 BTS.

*Estimate* \$654 – \$1,090

**13**     **HIDDEN BENCH 2005** (2)

La Brunante

Red Blend

**HIDDEN BENCH 2007** (2)

La Brunante

Red Blend

**HIDDEN BENCH 2005** (1)

Pinot Noir

**HIDDEN BENCH 2007** (1)

Pinot Noir

**HIDDEN BENCH 2009** (2)

Pinot Noir

**HIDDEN BENCH 2006** (1)

Terroir Cache

Red Blend

**HIDDEN BENCH 2007** (2)

Terroir Cache

Red Blend

**HIDDEN BENCH 2008** (2)

Terroir Cache

Red Blend

**HIDDEN BENCH 2009** (2)

Terroir Cache

Red Blend

**HIDDEN BENCH 2006** (1)

Tete De Cuvée

Chardonnay

**HIDDEN BENCH 2007** (1)

Tete De Cuvée

Chardonnay

**HIDDEN BENCH 2005** (2 hf. bts.)

Vidal Icewine

2 HF. BTS. & 17 BTS.    *Estimate* \$999 – \$1,665

- 14** **HILLEBRAND 1992** (1)  
Seyval Blanc  
**INNISKILLIN 1989** (1 hf. bt.)  
Brae Burn Estate Icewine  
**LAILEY VINEYARD 2012** (3)  
Syrah  
**LAILEY VINEYARD 2013** (1)  
Zweigelt  
**MARYNISSEN 2007** (1)  
31, Marynissen Vineyard  
Cabernet Sauvignon  
**MARYNISSEN 1991** (1)  
Cabernet Merlot  
**MARYNISSEN 2006** (1)  
Marynissen  
Syrah  
**MARYNISSEN 2006** (1)  
Marynissen Vineyard Estate Blend  
Syrah  
**MARYNISSEN 2004** (2)  
Reserve  
Cabernet Sauvignon  
**MARYNISSEN 2007** (1)  
Syrah  
**HENRY OF PELHAM 2000** (1 hf. bt.)  
Vidal Icewine  
**PEARL MORISSETTE 2011** (1)  
Cabernet Franc
- 2 HF. BTS. & 13 BTS. *Estimate* \$648 – \$1,080

- 15** **TAWSE 2009** (1)  
Estate Vineyard  
Chardonnay  
**TAWSE 2010** (1)  
Riesling  
**TAWSE 2009** (1)  
Robyn's Block  
Chardonnay  
**TAWSE 2009** (3)  
Sketches  
Chardonnay  
**THIRTY BENCH 2000** (1)  
Benchmark  
Red Blend  
**THIRTY BENCH 2008** (1)  
Red Blend
- 8 BTS. *Estimate* \$211 – \$351

## Chile

- 16** **CONCHA & TORO 1991** (2)  
Don Melchor Cab Sauv Private Reserve  
Cabernet Sauvignon
- 2 BTS. *Estimate* \$293 – \$488

## Alsace

- 17** **HUGEL 2006** (1)  
Gewurztraminer  
**PIERRE SPARR 2003** (1)  
Alsace Reisling  
**ZIND HUMBRECHT 1989** (1)  
Heimbourg  
Gewurztraminer
- 3 BTS. *Estimate* \$635 – \$1,059



## Armagnac

- 18 CH. LAUBADE 1958** (1)  
Bas Armagnac  
**FAUCHON 1942** (1)  
Armagnac
- 2 BTS. *Estimate* \$1,604 – \$2,673

## Bandol/Banyuls

- 19 DOMAINE DE LA GARENNE 1998** (2)  
Bandol  
**DOMAINE TEMPIER 2001** (4)  
Bandol  
**DOMAINES ET TERROIRS DU SUD 1959** (1)  
Banyuls
- 7 BTS. *Estimate* \$692 – \$1,153

## Bordeaux

- 20 BROUSTET 1975** (1)  
Barsac  
**LA VIEILLE CURIE 2009** (2)  
Fronsac  
**BEAUMONT 2005** (5)  
Haut-Medoc
- 8 BTS. *Estimate* \$470 – \$783

- 21 BELGRAVE 1995** (1)  
Haut-Medoc  
**CANTEMERLE 2000** (1)  
Haut-Medoc  
**PUY-CASTERA 2005** (4)  
Haut-Medoc  
**RUBAN BLEU D'ARSAC 1996** (2)  
Haut-Medoc
- 8 BTS. *Estimate* \$572 – \$953

- 22 SOCIANDO-MALLET 2006** (6)  
Haut-Medoc  
**SOCIANDO-MALLET 2009** (4)  
Haut-Medoc
- 10 BTS. *Estimate* \$1,100 – \$1,834

- 23 D'AIGUILHE 2001** (1)  
Côtes de Castillon  
**FRANC CARDINAL 2005** (1)  
Côtes de Francs  
**MALMAISON 1990** (1)  
Libournais  
**CLARKE 2009** (1)  
Listrac-Medoc  
**LA FONTAINE DE GENIN 2014** (1)  
Bordeaux
- 5 BTS. *Estimate* \$261 – \$435

- 24 BOYD CANTENAC 2005** (1)  
Margaux  
**CANTENAC BROWN 1970** (1)  
Margaux  
VTS  
**GISCOURS 1983** (1)  
Margaux  
**KIRWAN 1982** (1)  
Margaux  
**LASCOMBES 1981** (1)  
Margaux  
**LASCOMBES 2007** (1)  
Margaux
- 6 BTS. *Estimate* \$1,079 – \$1,798

- 25 MARGAUX 1970** (1)  
Margaux  
VTS  
**MARGAUX 1971** (1)  
Margaux  
VTS
- 2 BTS. *Estimate* \$1,160 – \$1,934



**26 MARGAUX 1978 (3)**  
Margaux  
3 BTS. *Estimate \$7,537 – \$12,561*

**27 MARGAUX 1981 (3)**  
Margaux  
3 BTS. *Estimate \$2,534 – \$4,224*

**28 MARGAUX 1982 (2)**  
Margaux  
1 bt. - TS  
RP = 97; The 1982 Chateau Margaux is a wine that I have tasted many times, constantly contrasted against the 1983 to see which is better. Frankly I found that it depends on the bottle, although maybe the 1983 edges it. But it is important to assess the 1982 on its own individual merits because it is a superb First Growth. This was a great bottle: fragrant and beautifully defined on the nose that on this occasion offered a more conspicuous graphite scent, which lent it a Pauillac-like personality. Allowing the wine to open and aerate, the traits one associates with the property emerge—wilted violets and rose petals. The palate is medium-bodied, fresh and mineral-laden, that suggestion of candied orange peel on the entry segueing into layers of pure red and black fruit. There is always something effortless about this Chateau Margaux and the pixelation on the finish is up there with the very best. Is it the best 1982 First Growth? No, it's not quite up there with 1982 Latour or Mouton-Rothschild, however, it is a sublime evocation of the vineyard and it will continue to give pleasure for a couple of decades yet.

2 BTS. *Estimate \$4,074 – \$6,790*

**29 MARGAUX 1995 (2)**  
Margaux  
RP = 97; Bottled very late (November, 1997), the 1995 has continued to flesh out, developing into one of the great classics made under the Mentzelopoulos regime. The color is opaque ruby/purple. The nose offers aromas of licorice and sweet smoky new oak intermixed with jammy black fruits, licorice, and minerals. The wine is medium to full-bodied, with extraordinary richness, fabulous equilibrium, and hefty tannin in the finish. In spite of its large size and youthfulness, this wine is user-friendly and accessible. This is a thrilling Margaux that will always be softer and more evolved than its broader-shouldered sibling, the 1996. How fascinating it will be to follow the evolution of both of these vintages over the next half century.

2 BTS. *Estimate \$2,432 – \$4,054*

**30 MARQUIS D'ALESMES 1962 (1)**  
Margaux  
**PALMER 1986 (1)**  
Margaux  
2 BTS. *Estimate \$605 – \$1,008*

**31 PRIEURE-LICHINE 2005 (2 mags.)**  
Margaux  
**PAVILLON ROUGE DE CHATEAU MARGAUX 1997 (2)**  
Margaux  
2 BTS. & 2 MAGS. *Estimate \$824 – \$1,374*

**32 LOUDENNE 1996 (1)**  
Medoc  
**ROTHSCHILD NV (1)**  
Napoleon VSOP Extra Fine Brandy Monopole  
**CHATEAU D'AIGUILHE 2001 (1)**  
Côtes de Castillon  
3 BTS. *Estimate \$247 – \$411*



- 33 CARRUADES DE LAFITE 1999** (1)  
Pauillac  
**CARRUADES DE LAFITE 2001** (3)  
Pauillac  
4 BTS. *Estimate* \$2,116 – \$3,526
- 34 CARRUADES DE LAFITE 2001** (4)  
Pauillac  
4 BTS. *Estimate* \$1,865 – \$3,108
- 35 CROIZET BAGES 2000** (1)  
Pauillac  
**GRAND-PUY-LACOSTE 2003** (6)  
Pauillac  
7 BTS. *Estimate* \$1,145 – \$1,909
- 36 GRAND-PUY-LACOSTE 2011** (3)  
Pauillac  
3 BTS. *Estimate* \$423 – \$705
- 37 HAUT BAGES LIBERAL 2000** (4)  
Pauillac  
4 BTS. *Estimate* \$624 – \$1,040

- 38 LAFITE ROTHSCHILD 1989** (2)  
Pauillac  
RP = 90; As I suspected, the 1989 and 1990 vintages of Lafite-Rothschild have gone dormant. Both wines were among the more closed, backward examples in my blind tasting. The 1989 Lafite is also outstanding, but closed, with the tannin more elevated, and the wine so stubbornly reticent as to make evaluation almost impossible. Lafite's 1989 was far more easy to taste and understand several years ago. It appears to have gone completely to sleep. This medium ruby-colored, medium-bodied wine reveals new oak in the nose, and a spicy finish. It is a quintessentially elegant, restrained, understated style of Lafite.  
2 BTS. *Estimate* \$3,582 – \$5,970
- 39** 2 BTS. *Estimate* \$3,582 – \$5,970
- 40 LAFITE ROTHSCHILD 1989** (1)  
Pauillac  
**LAFITE ROTHSCHILD 1996** (1)  
Pauillac  
2 BTS. *Estimate* \$4,121 – \$6,869
- 41 LAFITE ROTHSCHILD 2001** (2)  
Pauillac  
2 BTS. *Estimate* \$3,138 – \$5,230
- 42 LAFITE ROTHSCHILD 1965** (1)  
Pauillac  
TS  
**LAFITE ROTHSCHILD 1978** (1)  
Pauillac  
2 BTS. *Estimate* \$1,675 – \$2,792

**43** **LAFITE ROTHSCHILD 1979** (1)  
Pauillac  
**LAFITE ROTHSCHILD 1988** (1)  
Pauillac  
2 BTS. *Estimate \$2,966 – \$4,943*

**44** **LAFITE ROTHSCHILD 1989** (1)  
Pauillac  
**LAFITE ROTHSCHILD 1990** (1)  
Pauillac  
2 BTS. *Estimate \$3,745 – \$6,242*

**45** **LAFITE ROTHSCHILD 1990** (1 mag.)  
Pauillac  
RP = 96; Interestingly, a bottle of 1990 Lafite Rothschild I pulled from my cellar for a video blog on my web site was still buttoned down, tight, and even with extended decanting was not showing as much as I would have hoped. However, a bottle tasted, of all places, in Seoul, Korea in February, was only a few points short of perfection. That amazing performance motivated me to pull another bottle out of my cellar and follow it over the course of two days. Sure enough, by the second day the wine was roaring from the glass. The 1990 Lafite has turned out far better than my early assessment. While it still possesses some firmness, and performs like a late adolescent in terms of its evolution, it boasts gorgeous aromas of cedar, tobacco leaf, cassis, and lead pencil shavings. The explosive aromas are followed by a fleshy, full-bodied wine that should hit its peak in 5-8 years.  
1 MAG. *Estimate \$3,854 – \$6,424*

**46** **LAFITE ROTHSCHILD 1994** (1)  
Pauillac  
**LAFITE ROTHSCHILD 2000** (1)  
Pauillac  
RP = 98+; Since I gave this wine a perfect score, I suppose some could see this as a downgrade. I found everything still there for a perfect rating, but I was just struck by how tight and backward the wine was. A blend of 93.3% Cabernet Sauvignon and the rest Merlot, the wine still has a dark ruby/purple color and an extraordinarily youthful nose of graphite, black currants, sweet, unsmoked cigar tobacco, and flowers. The wine is rich, medium to full-bodied, but has that ethereal elegance and purity that is always Lafite. I originally predicted that it would first reach maturity in 2011, but I would push that back by 5-7 years now, although it has 50-60 years of life in front of it. Owners of this beauty are probably best advised to forget it for 5 years. Tasted next to a 1996 several days after the 2000 tasting, the 1996, which is a perfect wine, was far closer to full maturity than the 2000.  
2 BTS. *Estimate \$4,113 – \$6,855*

**47 LATOUR 1966** (1 mag.)

Pauillac

RP = 96; The 1966 Latour remains an exemplar of the vintage, certainly one of the best, if not the best Left Bank wine of the vintage. Here, served blind, its quality was a beacon, quintessentially Pauillac with that trademark graphite seam through the intense black fruit, cold stone and a touch of tobacco. It remains undimmed by its age (though this was served from a magnum of impeccable provenance). The palate is medium-bodied and that graphite theme continues unabated, flanked by beautiful, precise and pure vestiges of black fruit. "Pure class" are the final two words of my tasting note and at 50 years old, they sum up this immensely impressive Château Latour.

**LATOUR 1970** (1)

Pauillac

VM = 90; Full medium-deep red. Medicinal, austere nose of plum and chocolate; slightly off wood note. Fat and plump, but the fruit is somewhat suppressed and the finish somewhat dried by the off nose. Still a very satisfying drink, but not up to typical bottles of this outstanding wine.

1 BT. & 1 MAG. *Estimate* \$2,805 – \$4,675**48 LATOUR 1982** (1)

Pauillac

VTS

RP = 100; 1982 was a great vintage—relatively warm and prolific, producing wines of richness and depth. The 1982 Latour has a medium garnet-brick color and then pow!—it belts out powerful notes of star anise, dried roses, sandalwood and new leather with a core of kirsch, blackberry tart, dried mulberries and blackcurrant pastilles. Full-bodied, rich and spicy with bags of fruit and tons of savory fireworks, it finishes with epic persistence.

1 BT. *Estimate* \$4,400 – \$7,334**49 VTS**1 BT. *Estimate* \$4,400 – \$7,334**50 LATOUR 1982** (1)

Pauillac

**LATOUR 1988** (1)

Pauillac

2 BTS. *Estimate* \$3,597 – \$5,995**51 LATOUR 1989** (3)

Pauillac

3 BTS. *Estimate* \$3,611 – \$6,018**52 LATOUR 1994** (1)

Pauillac

**LATOUR 1995** (1)

Pauillac

RP = 96; A beauty, the opaque dense purple-colored 1995 exhibits jammy cassis, vanillin, and minerals in its fragrant but still youthful aromatics. Medium to full-bodied, with exceptional purity, superb concentration, and a long, intense, ripe, 40-second finish, this is a magnificent example of Latour. As the wine sat in the glass, scents of roasted espresso and toasty new oak emerged. This classic will require considerable cellaring.

2 BTS. *Estimate* \$3,611 – \$6,019**53 LATOUR 1995** (3)

Pauillac

3 BTS. *Estimate* \$3,942 – \$6,570

Lot 55



**54 LATOUR 1996 (1)**

Pauillac

RP = 99; A hot, dry August produced very concentrated grapes in 1996. However, it turned a bit rainy in mid-September through early October, making the vintage less consistent on the Right Bank and in Graves. But as the weather turned glorious from early October on, it was an amazing year for later-harvested Cabernet in the Médoc. There was new ownership at Latour by this time, and a new vat room was completed just prior to the harvest this year. The 1996 Latour is medium to deep garnet in color with a profound earthy, meaty, gamey nose with hints of blueberry preserves, crème de cassis and pencil shavings. The palate is full-bodied, concentrated and packed with muscular fruit, with a firm, ripe, grainy backbone and epically long finish. Showing much more youthfully than the 2000 tasted on the same day and still possessing bags of youthful fruit in the mid-palate, this beauty is going to go on and on!

**LATOUR 1997 (1)**

Pauillac

2 BTS. *Estimate* \$2,615 – \$4,359**55 LATOUR 1997 (2)**

Pauillac

2 BTS. *Estimate* \$2,054 – \$3,424**56 LATOUR 2000 (1)**

Pauillac

RP = 97; 2000 saw a warm, dry July and August with a small amount of rain from mid-September onward. Composed of 77% Cabernet Sauvignon, 16% Merlot, 4% Cabernet Franc and 3% Petit Verdot, the 2000 Latour has a deep garnet color and is showing a good amount of evolution, sporting mature notes of fried exotic spices, hoisin, unsmoked cigars and fruitcake with hints of incense, potpourri, cast iron pan and charcuterie. Medium-bodied, soft, plush and savory in the mouth, it has a long, mineral-tinged finish. 14,000 cases were made this year, representing 48% of production.

1 BT. *Estimate* \$2,125 – \$3,541**57 LES FORTS DE LATOUR 1990 (1)**

Pauillac

**LES FORTS DE LATOUR 2000 (1)**

Pauillac

2 BTS. *Estimate* \$1,031 – \$1,719**58 LYNCH-BAGES 1957 (1)**

Pauillac

**LYNCH-BAGES 1986 (1)**

Pauillac

VTS

**LYNCH-BAGES 2001 (1)**

Pauillac

3 BTS. *Estimate* \$1,291 – \$2,152



**59 LYNCH-BAGES 1990 (3)**  
Pauillac

RP = 99; This magnificent Lynch Bages has been drinking well since the day it was released and it continues to go from strength to strength. The biggest, richest, fullest-bodied Lynch Bages until the 2000, the fully mature 1990 exhibits an unbelievably explosive nose of black currants, cedarwood, herbs and spice. The majestic, classically Bordeaux aromatics are followed by a full-bodied, voluptuously textured, rich, intense wine with superb purity as well as thrilling levels of fruit, glycerin and sweetness.

3 BTS. *Estimate \$2,180 – \$3,633*

**60 MOUTON ROTHSCHILD 1948 (1)**  
Pauillac  
LS  
**MOUTON ROTHSCHILD 1967 (2)**  
Pauillac

3 BTS. *Estimate \$3,096 – \$5,160*

**61 MOUTON ROTHSCHILD 1972 (1)**  
Pauillac  
**MOUTON ROTHSCHILD 1979 (1)**  
Pauillac

2 BTS. *Estimate \$2,296 – \$3,827*

**62 MOUTON ROTHSCHILD 1994 (2)**  
Pauillac

2 BTS. *Estimate \$1,808 – \$3,014*

**63 MOUTON ROTHSCHILD 1995 (2)**  
Pauillac

2 BTS. *Estimate \$2,330 – \$3,884*

**64 MOUTON ROTHSCHILD 1996 (3)**  
Pauillac

3 BTS. *Estimate \$2,871 – \$4,785*

**65 MOUTON ROTHSCHILD 2000 (1)**  
Pauillac

RP = 96+; Perhaps the most beautiful packaging ever on a Bordeaux bottle, Baroness Philippine de Rothschild literally produced a work of art in the gold-engraved bottle of 2000 Mouton Rothschild. Of course, one can't drink the glass, but this is a top-flight Mouton Rothschild, eclipsed only by the 2006 and 2009. A rich, tannic, earthy style, with loads of creme de cassis and floral notes, the final blend of 86% Cabernet Sauvignon and 14% Merlot is a full-bodied wine with plenty of coffee, earth, chocolatey notes, and still plenty of tannin to resolve.

1 BT. *Estimate \$3,925 – \$6,541*

**66 PICHON LONGUEVILLE  
COMTESSE DE LALANDE 1978 (3)**  
Pauillac

3 BTS. *Estimate \$1,202 – \$2,004*



- 67 PICHON LONGUEVILLE 1996 (2)**  
Pauillac  
**PICHON LONGUEVILLE BARON 1990 (1)**  
Pauillac
- RP = 98; The 1990 Pichon-Longueville Baron has always been one of my benchmark wines, one that never ceases to perform. Now at 27 years of age, it is clearly at its peak, and what a wondrous thing it is. Now showing some bricking on the rim, the bouquet is utterly sublime, with red berries, cedar, touches of graphite, crushed rose petals and incense. You just want to become enveloped by these aromas. The palate is perfectly balanced, perhaps not as structured as it once showed since the tannins have mellowed, but what you get is a Pauillac relishing its secondary phase, which is almost Burgundy-like in terms of mouthfeel. Suffused with tension, it gains weight in the mouth toward the slightly tart finish. It is a Pichon Baron that only knows how to give sophisticated drinking pleasure. I once wrote that Pichon Baron is better than many 1990 First Growth, and that is a statement I have no reason to change.
- PICHON LONGUEVILLE BARON 1993 (1)**  
Pauillac  
**PICHON LONGUEVILLE BARON 2012 (1)**  
Pauillac  
2018
- 5 BTS. *Estimate \$2,065 – \$3,441*
- 68 PONTET-CANET 1989 (3)**  
Pauillac
- 3 BTS. *Estimate \$938 – \$1,563*
- 69 PONTET-CANET 1994 (4)**  
Pauillac
- 4 BTS. *Estimate \$886 – \$1,476*
- 70 PONTET-CANET 1995 (11)**  
Pauillac
- 11 BTS. *Estimate \$2,152 – \$3,586*

- 71 PONTET-CANET 1996 (1)**  
Pauillac  
**PONTET-CANET 2000 (2)**  
Pauillac
- RP = 92; Tasted at the Pontet-Canet vertical, the 2000 Château Pontet-Canet is perhaps where things start getting interesting, as Alfred Tesseron's top-to-toe reconfiguration of the vineyard and vinification began to impact and ameliorate the wine. It has a lovely bouquet of blackberry and briary fruit, hints of black truffle developing, later damp earth. There is an intensity here, if not the complexity of the best millennial Pauillacs. The palate is medium-bodied with a mixture of red and black fruit, cedar and sous-bois percolating up through and rendering it a "serious" Pontet-Canet in keeping with the vintage. There is a subtle and yet insistent grip on the finish. It has always been a tannic wine, but these are now softening, albeit at a slower pace than some might like. Therefore, I might be inclined to hold on to bottles for another 3-4 years.
- PONTET-CANET 2005 (1)**  
Pauillac
- RP = 97; Tasted at the Pontet-Canet vertical in London, the 2005 Château Pontet-Canet has long been one of the stars of the vintage and this might well be the best of over a dozen showings of this wine. However, do not expect ostentation on the nose. This is 2005 and like many wines of this vintage, even with considerable decanting, it remained broody and introspective on the nose, as if it is checking you out and seeing if you are worthy. Once you have been accepted, then it swings the doors open to reveal gorgeous scents of blackberry, briary and cassis fruit, perhaps a little more sous-bois than I have noticed compared to previous bottles. The palate is medium-bodied, but dense and structured—certainly a more masculine Pontet-Canet built for long-term ageing. Yet it retains marvelous freshness and vitality all the way through to the pencil-lead, quite saline finish.
- 4 BTS. *Estimate \$1,387 – \$2,312*

**72 CARBONNIEUX 2003 (1)**

Pessac-Leognan

**DE FIEUZAL 1985 (1)**

Pessac-Leognan

**LA GARDE 2000 (1)**

Pessac-Leognan

**LA MISSION HAUT-BRION 2000 (1)**

Pessac-Leognan

RP = 100; One of the wines of the vintage, the 2000 has barely budged in its evolution since it was bottled and released in 2002. After ten years in bottle, it still reveals a dense opaque purple color along with a potentially sensational bouquet of blueberries, black currants, graphite, asphalt and background oak. Extremely powerful, full-bodied and superbly concentrated with good acidity and high but round tannins, this massive La Mission-Haut-Brion should take its place among this estate's most hallowed vintages when it hits full maturity in another one to two decades. I was surprised by just how youthful this wine tasted at age 12. If tasted blind, I would have guessed it to be around 4 to 5 years old.

4 BTS. *Estimate \$1,607 – \$2,679***73 HAUT-BRION 1971 (3)**

Pessac-Leognan

3 BTS. *Estimate \$2,225 – \$3,708***74 HAUT-BRION 1978 (1)**

Pessac-Leognan

**HAUT-BRION 1995 (1)**

Pessac-Leognan

2 BTS. *Estimate \$1,897 – \$3,162***75 HAUT-BRION 1962 (1)**

Pessac-Leognan

3CM

**HAUT-BRION 1962 (1)**

Pessac-Leognan

4CM

**HAUT-BRION 1962 (3)**

Pessac-Leognan

6CM

5 BTS. *Estimate \$3,693 – \$6,155***76 LES CARMES HAUT-BRION 2000 (8)**

Pessac-Leognan

8 BTS. *Estimate \$1,109 – \$1,848***77 PAPE CLEMENT 1978 (2)**

Pessac-Leognan

**PAPE CLEMENT 1988 (2)**

Pessac-Leognan

**PAPE CLEMENT 1995 (1)**

Pessac-Leognan

**PAPE CLEMENT 1996 (1)**

Pessac-Leognan

6 BTS. *Estimate \$1,436 – \$2,393***78 CLINET 1989 (2)**

Pomerol

RP = 100; One of the great modern-day Bordeaux, the 1989 Clinet still has a saturated purple color and a sweet nose of creme de cassis intermixed with incense, licorice, smoke, and mineral. As the wine sits in the glass, more blueberry and blackberry notes emerge, intermixed with some toasty oak, earth, and spice. This spectacularly concentrated, full-bodied, multi-dimensional wine is the stuff of dreams.

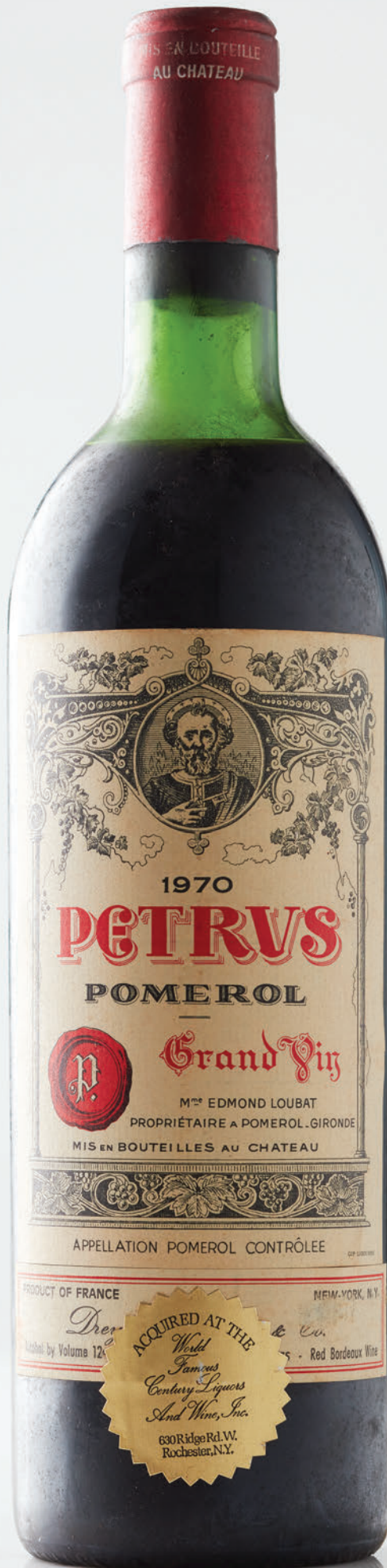
2 BTS. *Estimate \$2,414 – \$4,024***79** 2 BTS. *Estimate \$2,414 – \$4,024*

- 80**     **DE SALES 1978** (1)  
 Pomerol  
 VTS  
**DE SALES 1978** (1)  
 Pomerol  
 TS  
**DE SALES 1978** (1)  
 Pomerol  
 MS  
**DOMAINE DE L'EGLISE 1989** (1)  
 Pomerol  
**LA FLEUR-PETRUS 1994** (3 hf. bts.)  
 Pomerol  
 1 bt. - VTS  
  
 3 HF. BTS. & 4 BTS.     *Estimate* \$859 – \$1,432
- 81**     **LATOIR A POMEROL 1989** (3)  
 Pomerol  
**LE GAY 1990** (2)  
 Pomerol  
  
 5 BTS.     *Estimate* \$1,430 – \$2,384

- 82**     **L'EVANGILE 1990** (1)  
 Pomerol  
  
 RP = 93; The 1990 Château L'Evangile has not been as consistent as its 1989 counterpart (see Robert Parker's previous tasting note). Here it showed well, even if I maintain a preference for the 1989. The nose is sultry, broody and takes time to unfurl, almost reluctantly offering up sage and black truffle infused black fruit, developing a subtle aniseed-like aroma with aeration. The palate is medium-bodied with fine but firm tannin. It is not as charming as the 1989, sweeter in the mouth, fleshier perhaps. That initial rush of black fruit is usurped by red fruit towards the finish, laced with bay leaf and a pinch of white pepper.
- MOULINET 1995** (1)  
 Pomerol  
**NENIN 2000** (2)  
 Pomerol  
**NENIN 2005** (3)  
 Pomerol  
  
 7 BTS.     *Estimate* \$1,478 – \$2,464



Lot 83A/83B



**83A PETRUS 1970 (1)**

Pomerol  
TS

RP = 99; This dark garnet-colored wine shows considerable amber at the edge. I have always had a tenency to taste this side by side with the 1971, and it has been fascinating how the 1971 was fully mature at a much younger age yet continued to hold onto life without losing any of its seductive fruit and intensity. The 1970 started off life more tannic, backward, massive, but needing considerable time, and it has now hit full stride. It is a profound Petrus, and certainly one of the great Petrus' of the last half century. The wine has a huge nose of cedar, caramel, vanilla, tobacco, fruitcake, and licorice-infused black cherry jam. It is unctuously textured and very full-bodied, with extraordinary sweetness and glycerin, and a layered, viscous finish. This wine should continue to drink well for at least another 20 years.

1 BT. *Estimate \$4,651 – \$7,751*

**83B TS**

1 BT. *Estimate \$4,651 – \$7,751*

**84 TROTANOY 2000 (3)**

Pomerol

RP = 95; Tasted at the Trotanoy vertical in Hong Kong, the 2000 Trotanoy seems to be improving with age. It has an outstanding bouquet with far more fruit intensity than I anticipated: mulberry, blackberry, briary, broom and white pepper all mingling together with superb delineation. The palate displays exquisite balance, fresh and focused with a clean and precise finish that is only just beginning to show what it can do. Like so many millennial Bordeaux it has matured at its own pace, however, on this showing it seems determined to reward those with the greatest patience.

3 BTS. *Estimate \$2,000 – \$3,333*

**85 TROTANOY 2010 (3)**

Pomerol

RP = 96; Tasted at the Trotanoy vertical in Hong Kong, the 2010 Trotanoy was consistent with my previous tasting notes. The bouquet, this time, was unapologetically Pomerol whereas in the past it has swayed a little towards Saint Emilion. There are still those hints of marmalade that infuse the black fruit, although there is now more mineralité emerging. The palate is beautifully balanced with fine but firm tannin. Again, the mineralité locked into this wine is at a level that I have not seen before, and the energy, the coiled-up tension on the finish is just outstanding. Is it as good as the 2009? Perhaps not quite...but, it is not far off.

3 BTS. *Estimate \$1,993 – \$3,321*

**86 BASTOR-LAMONTAGNE 2001 (1 hf. bt.)**

Sauternes

**CANTEGRIL 2001 (1)**

Sauternes

**CARMES DE-RIEUSSEC 2007 (1 hf. bt.)**

Sauternes

**D'YQUEM 1970 (1)**

Sauternes

**FILHOT 1975 (1)**

Sauternes

**FILHOT 1976 (1)**

Sauternes

2 HF. BTS. & 4 BTS. *Estimate \$1,211 – \$2,019*

- 87 JOHNSTON NV (1)**  
Sauternes  
**LAMOTHE GUIGNARD 2005** (6 hf. bts.)  
Sauternes  
**RIEUSSEC 2007 (2)**  
Sauternes
- RP = 92; The 2007 Rieussec is a blend of 87% Semillon, 4.5% Muscadelle and 8.5% Sauvignon Blanc picked between 13 September and 31 October. It has an almost Barsac-like bouquet with barley sugar joining the ginger and honeyed notes, quite powerful although I feel this is just going through a sullen patch at the moment. The palate is very pure and balanced with a wonderful seam of acidity that slices through the viscous botrytis fruit, quite spicy on the finish, although it does not possess the persistence of the 2005 or 2009, just cutting away swiftly.
- SUDUIRANT 2006** (2 hf. bts.)  
Sauternes
- 8 HF. BTS. & 3 BTS. *Estimate* \$771 – \$1,285

- 88 ANGELUS 1990 (1)**  
St. Emilion
- RP = 99; A blend of 60% Merlot and 40% Cabernet Franc, this is clearly the greatest Angelus until the 2000, 2003 and then the perfect 2005. Beautiful, sweet plum, blackberry and blueberry fruit soar from the glass of this opaque, purple wine that still hasn't lost much in color. Deep, opulent, voluptuously textured, full-bodied and multidimensional, this is a stunner and just now approaching its plateau of full maturity.
- AUSONE 1967 (1)**  
St. Emilion
- 2 BTS. *Estimate* \$1,619 – \$2,699

- 89 CANON 1989 (6)**  
St. Emilion
- 6 BTS. *Estimate* \$2,052 – \$3,420
- 90 CHAUVIN 2000 (4)**  
St. Emilion
- 4 BTS. *Estimate* \$502 – \$836
- 91 CHEVAL BLANC 1976 (1)**  
St. Emilion  
**CHEVAL BLANC 1978 (1)**  
St. Emilion
- 2 BTS. *Estimate* \$1,178 – \$1,964
- 92 CLOS DE L'ORATOIRE 2000 (3)**  
St. Emilion  
**CLOS DE SARPE 2000 (3)**  
St. Emilion  
**DESTIEUX 2000 (3)**  
St. Emilion
- 9 BTS. *Estimate* \$1,462 – \$2,436
- 93 GRANDE MAYNE 1989 (6)**  
St. Emilion
- 6 BTS. *Estimate* \$1,094 – \$1,824

**94** **LA CONFESSION 2008** (1)  
St. Emilion  
**LA COUSPAUDE 2000** (1)  
St. Emilion  
**LA DOMINIQUE 1986** (1)  
St. Emilion  
**LA TOUR DU PIN FIGEAC 1989** (3)  
St. Emilion  
**LARMANDE 1995** (3)  
St. Emilion  
**L'ARROSEE 1983** (1)  
St. Emilion  
10 BTS. *Estimate \$995 – \$1,658*

**95** **MONBOUSQUET 2005** (1 mag.)  
St. Emilion  
**PIPEAU 2005** (3 mags.)  
St. Emilion  
4 MAGS. *Estimate \$1,054 – \$1,757*

**96** **MOULIN SAINT GEORGES 1995** (3)  
St. Emilion  
**MOULIN SAINT GEORGES 2003** (1)  
St. Emilion  
**QUINAULT L'ENCLOS 2000** (1)  
St. Emilion  
5 BTS. *Estimate \$584 – \$973*

**97** **TROPLONG MONDOT 1990** (1)  
St. Emilion  
**TROPLONG MONDOT 2006** (1)  
St. Emilion  
**VIEUX POURRET 2005** (6)  
St. Emilion  
8 BTS. *Estimate \$1,268 – \$2,114*

**98** **CALON SEGUR 1982** (1 mag.)  
St. Estephe  
1 MAG. *Estimate \$1,991 – \$3,319*

**99** **CALON SEGUR 1995** (7)  
St. Estephe  
7 BTS. *Estimate \$2,579 – \$4,298*

**100** **CALON SEGUR 1996** (2)  
St. Estephe  
2 BTS. *Estimate \$550 – \$916*

**101** **COS D'ESTOURNEL 1955** (1)  
St. Estephe  
HS  
**COS D'ESTOURNEL 1990** (2)  
St. Estephe

RP = 94; Not as concentrated as the 1982, or as most of the vintages made since 2001, the 1990 Cos has reached full maturity. It exhibits sweet berry fruit intermixed with spice box, herbs, and spring flowers. Expansive, round, and sensual, with wonderful purity as well as lushness.

3 BTS. *Estimate \$1,529 – \$2,549*

**102** **L'ARGILUS DU ROI 2003** (1)  
St. Estephe  
**MEYNEY 1975** (1 mag.)  
St. Estephe  
**MEYNEY 1989** (1 mag.)  
St. Estephe  
1 BT. & 2 MAGS. *Estimate \$547 – \$911*

**103 MONTROSE 1990 (4)**

St. Estephe

RP = 100; Tasted at the Montrose vertical in London, the 1990 Montrose is a blend of 64% Cabernet Sauvignon, 32% Merlot and 4% Cabernet Franc (almost identical to the 1989 Montrose) and picked between 14 September and 3 October. It has a formidable reputation and for years it overshadowed the 1989. That said, it is well known that there are incidences of brettanomyces that compromise some bottles and the one bottle in London showed just a tincture of this. It still merited a score of 97/100, though it only served to highlight the ethereal delineation of the 1989. Then literally a couple of days later. I was served blind a magnum of the 1990 Montrose in Cape Town, which had been purchased on release and stored in perfect conditions. Now, here was the real deal, unfettered by any infection, a regal Saint Estèphe. It shows approximately the same evolution as the 1989 in bottle, but unsurprisingly showed less bricking in magnum format. The bouquet is cut from a different cloth to the 1989 and attests to that warm vintage: hickory, clove, undergrowth and wild fennel, later garrigue-like scents and terracotta, the latter two more pronounced on the bottle format compared to the youthful magnum. The palate is full-bodied and powerful, yet the balance is perfect, a ballerina-like poise with the structure of the Forth Bridge. It is a multi-layered Montrose that offers enormous length, fresh and vibrant with the magnum demonstrating tangible mineralite and tension as it fans out on the crescendo of a finish—a fanfare for Saint Estèphe in all its glory. Improving all the time in the glass, this example of 1990 Montrose is a privilege to behold. One can speculate whether larger formats are a "safer bet" in terms of experiencing this behemoth without any brettanomyces. Perhaps. However, if you do come across the 1990 Montrose like this, you are in the presence of a king.

4 BTS.

*Estimate* \$4,555 – \$7,592**104 MONTROSE 1990 (3)**

St. Estephe

**MONTROSE 2008 (1)**

St. Estephe

4 BTS.

*Estimate* \$3,950 – \$6,583**105 BEYCHEVELLE 1945 (1)**

St. Julien

LS

**BEYCHEVELLE 1990 (2)**

St. Julien

3 BTS.

*Estimate* \$905 – \$1,508**106 BRANAIRE DUCRU 2000 (12)**

St. Julien

RP = 94; A beautiful wine from Branaire, the 2000 is close to full maturity, and should offer plenty of pleasure over the next 15-20 years. Its deep ruby/purple hue is accompanied by scents of boysenberries, black currants, and spring flowers. This medium to full-bodied, pure St.-Julien hits the palate with authority, displaying silky tannins as well as wonderful richness, depth, and texture.

12 BTS.

*Estimate* \$2,635 – \$4,392**107 CLOS DE MARQUIS 2003 (6)**

St. Julien

6 BTS.

*Estimate* \$1,116 – \$1,860



Lot 156



**108 DUCRU-BEAUCAILLOU 1966** (1)  
St. Julien  
**DUCRU-BEAUCAILLOU 1976** (1)  
St. Julien  
**DUCRU-BEAUCAILLOU 1979** (1)  
St. Julien  
**DUCRU-BEAUCAILLOU 1996** (2)  
St. Julien  
  
5 BTS. *Estimate* \$2,569 – \$4,281

**109 DUCRU-BEAUCAILLOU 2000** (3)  
St. Julien  
  
RP = 95; A stunning wine from Ducru Beaucaillou which showcases its great terroir, this elegant but substantial 2000 has a dense purple color that has hardly budged since it was first bottled. Displaying a floral note, with hints of boysenberries, black raspberries, black currants and a touch of background oak, the wine has superb concentration and density, but still has some substantial tannins that are not yet fully resolved.  
  
**DUCRU-BEAUCAILLOU 2001** (2)  
St. Julien  
  
VM = 91; Moderately saturated ruby-red. Aromas of redcurrant, cedar and tobacco. At once juicy and soft, with currant and tobacco flavors. Offers a silky texture and lovely volume but not quite the structure or grip of the 2002. But this is lush, captivating claret.  
  
5 BTS. *Estimate* \$2,411 – \$4,018

**110 GLORIA 1989** (1)  
St. Julien  
**GRUAUD LAROSE 1996** (2)  
St. Julien  
**GRUAUD-LAROSE 1962** (1)  
St. Julien  
  
4 BTS. *Estimate* \$1,061 – \$1,768

**111 GRUAUD LAROSE 2003** (2)  
St. Julien  
**GRUAUD LAROSE 2004** (3)  
St. Julien  
  
5 BTS. *Estimate* \$941 – \$1,568

**112 LAGRANGE 1995** (7)  
St. Julien  
  
7 BTS. *Estimate* \$764 – \$1,274

**113 LANGOA BARTON 2001** (2)  
St. Julien  
**LEOVILLE BARTON 1989** (1)  
St. Julien  
  
3 BTS. *Estimate* \$595 – \$991

**114 LEOVILLE BARTON 1998** (6)  
St. Julien  
  
6 BTS. *Estimate* \$1,332 – \$2,220

**115 LEOVILLE BARTON 2000 (2)**

St. Julien

Red

RP = 95+; I found this to be one of the more backward wines of the 2000 vintage and gave it a window of maturity of 2015-2040 when I reviewed it in 2003. In my two recent tastings of it, I changed that window to 2018-2050, which probably says more than the following tasting note could say. This is a behemoth – dense, highly extracted, very tannic, broodingly backward, with a dense purple color and very little evolution since it was bottled 8 years ago. Wonderfully sweet cedar and fruitcake notes are intermixed with hints of creme de cassis, licorice, and earthy forest floor. It is full-bodied and tannic, with everything in place, but like so many wines that come from Leoville Barton, it makes a mockery of many modern-day consumers wanting a wine for immediate gratification. Those who bought it should continue to exercise patience and be proud to own a wonderful classic with five decades of longevity ahead of it.

**LEOVILLE BARTON 2005 (2)**

St. Julien

RP = 92; Léoville Barton's 2005 has an inky ruby/purple color and shows fairly high tannin levels, but the balance is slightly better than the Langoa Barton, which is very hard. This is probably a 30-year wine and needs at least another 20 years of cellaring, and while the tannins are high, they are balanced more thoroughly and competently. With deep cassis and red currant fruit, the wine is earthy, spicy, medium to full-bodied, and needs at least another decade.

**LEOVILLE BARTON 2008 (2)**

St. Julien

**LEOVILLE BARTON 2009 (2)**

St. Julien

RP = 94; Medium to deep garnet colored, the 2009 Leoville Barton gives up expressive cherry cordial, warm cassis and blackberry tart scents with nuances of menthol, cigar box and fallen leaves. Medium-bodied and elegantly played with loads of freshness and soft tannins, it has a long, perfumed finish.

**LEOVILLE BARTON 2010 (2)**

St. Julien

RP = 96+; A splendid showing, much stronger from bottle than it was from barrel, the Leoville Barton is one of the spectacular wines of the vintage. Inky purple to the rim, its huge tannin gives this wine real potential for 30-50 years of longevity. It is a classic, powerful Bordeaux made with no compromise. A superstar of the vintage, the wine has notes of pen ink and creme de cassis, good acidity, sweet, subtle oak, and massive extraction and concentration. I thought it was one of the most backward wines of the vintage two years ago, and nothing has changed in the ensuing upbringing of the wine in cask except that the wine now seems even richer, denser and fuller than I previously thought. The beautiful purity, symmetry, and huge finish of nearly a minute make this one of the all-time great classics from Leoville Barton.

10 BTS.

*Estimate* \$2,850 – \$4,750**116 LEOVILLE LAS CASES 1979 (1 d. mag.)**

St. Julien

Stained Label

**LEOVILLE LAS CASES 1989 (2)**

St. Julien

2 BTS. & 1 D. MAG. *Estimate* \$2,121 – \$3,535

**117 LEOVILLE LAS CASES 1990 (3)**

St. Julien

RP = 96; As one might expect, this is a brilliant wine, but it remains shockingly young, even for the fast evolving 1990s. Its deep ruby/purple color is accompanied by a classic, nearly restrained set of aromatics that includes notions of sweet black cherries, black currants, lead pencil, and wet stones. In the mouth, it is full-bodied, and while technically low in acidity, there is a freshness, delineation, and classicism in this full-throttle, rich, concentrated, impeccable 1990. While still youthful, it is easy to appreciate despite its substantial tannins. It is not quite as backward as the 1990 Lafite Rothschild or 1990 Latour.

3 BTS. *Estimate* \$2,142 – \$3,570**118 LEOVILLE LAS CASES 1995 (2)**

St. Julien

**LEOVILLE LAS CASES 1996 (1)**

St. Julien

**LEOVILLE POYFERRE 1990 (1)**

St. Julien

RP = 97; Absolutely spectacular, the 1990 Leoville Poyferre is much more evolved than either of its two Leoville neighbors. Its opaque plum/garnet color is accompanied by a gorgeous bouquet of smoke, charcoal, creme de cassis, and flowers. Fleshy and opulent, it comes across like a St.-Julien with a Pomerol texture and allure. This beauty has reached full maturity.

**TALBOT 1981 (1)**

St. Julien

5 BTS. *Estimate* \$2,587 – \$4,311

## Burgundy

**119 AURELIEN VERDET 2011 (1)**

Nuits St Georges Les Damodes

**BARTON & GUESTIER 1971 (1)**

Bonnes Mares

3CM

**BARTON & GUESTIER 1966 (2)**

Volnay

4 BTS. *Estimate* \$662 – \$1,104**120 BOUCHARD AINE ET FILS 1978 (1)**

Chambertin Clos De Beze

**BOUCHARD PERE & FILS 1996 (1)**

Le Corton

**BOUCHARD PERE & FILS 2014 (1)**

Petit Chablis

**CALVET 1970 (2)**

Musigny

6CM

5 BTS. *Estimate* \$1,250 – \$2,084**121 COMTE ARMAND 2011 (6)**

Pommard Clos Des Epeneaux

6 BTS. *Estimate* \$1,184 – \$1,974**122 COMTE GEORGES DE VOGUE 1995 (1)**

Chambolle-Musigny

**DANIEL RION & FILS 1993 (2)**

Vosne Romanee

**DANIEL RION ET FILS 2011 (1)**

Nuits St Georges Les Grandes Vignes

**DANIEL RION ET FILS 1996 (1)**

Vosne-Romanee Les Beaux Monts

**DENIS MUGNERET 1999 (1)**

Nuits St Georges Les Boudots

6 BTS. *Estimate* \$1,118 – \$1,863

- 123** **DOMAINE BRUNO CLAIR 2009** (4)  
Gevrey-Chambertin Clos Du Fonteny  
**DOMAINE JESSIAUME 2013** (2)  
Beaune Les Cent Vignes  
6 BTS. *Estimate \$776 – \$1,294*
- 124** **DOMAINE LATOUR-GIRAUD 2012** (2)  
Meursault Genevieres Cuvée Des Pierre  
**DOMAINE LATOUR-GIRAUD 2013** (6)  
Meursault Genevieres Cuvée Des Pierre  
**DOMAINE LOUIS MOREAU 2012** (4)  
Chablis Les Clos  
12 BTS. *Estimate \$1,800 – \$3,000*
- 125** **FRANCOIS LABET 1990** (2)  
Hautes Côtes De Beaune  
**HENRI DE VILLAMONT 1953** (1)  
Chassagne-Montrachet Les Chenevottes  
**HENRY DE VEZELAY 1999** (1)  
Henry De Vezelay  
**J. PRIEUR 1993** (1)  
Beaune Clos De La Feguine  
**JOBLLOT 1996** (1)  
Givry Clos Du Cellier Aux Moines  
6 BTS. *Estimate \$755 – \$1,259*
- 126** **JOSEPH DROUHIN 1969** (2)  
Beaune Champimonts  
**JOSEPH DROUHIN 2006** (1)  
Puligny-Montrachet  
**JOSEPH DROUHIN 1969** (2)  
Savigny Les Beaune Dominodes  
5 BTS. *Estimate \$1,357 – \$2,261*
- 127** **LOUIS JADOT 2010** (4)  
Nuits-Saint-Georges Les Boudots  
4 BTS. *Estimate \$607 – \$1,012*

- 128** **LOUIS LATOUR 2016** (1)  
Bourgogne Chardonnay  
**LOUIS LATOUR 2012** (1)  
Nuits St Georges Les Damodes  
**LOUIS LATOUR 2012** (6)  
Nuits St Georges Les Damodes  
8 BTS. *Estimate \$1,105 – \$1,842*
- 129** **MAISON ROCHE DE BELLENE 2010** (6)  
Charmes-Chambertin  
6 BTS. *Estimate \$1,886 – \$3,144*
- 130** **MARCHAND TAWSE 2012** (3)  
Gevrey Chambertin Champeaux  
**MARCHAND TAWSE 2012** (2)  
Gevrey Chambertin Lavaux St Jacques  
**MARCHAND TAWSE 2013** (1)  
Morey St Denis Les Millandes  
**MARCHAND TAWSE 2012** (1)  
Nuits St Georges  
7 BTS. *Estimate \$1,088 – \$1,813*
- 131** **MARCHAND TAWSE 2012** (6)  
Vosne-Romanee Les Suchots  
6 BTS. *Estimate \$1,408 – \$2,346*
- 132** **MICHEL COUVREUR 1982** (1)  
Mazis-Chambertin  
**MEO CAMUZET 2008** (2)  
Clos De Vougeot Grand cru  
**MICHEL JUILLOT 2011** (2)  
Corton Charlemagne Grand cru  
5 BTS. *Estimate \$1,565 – \$2,608*



**133 MOILLARD 1966** (1)  
 Chambolle-Musigny  
 3CM  
**MOILLARD 1976** (1)  
 Chambertin  
**MOILLARD 1978** (2)  
 Chambertin Clos De Beze  
**MOILLARD 1978** (2)  
 Chambolle-Musigny  
**MOILLARD 1969** (1)  
 Clos De Vougeot  
**MOILLARD 1970** (1)  
 Clos De Vougeot  
**MOILLARD 1974** (3)  
 Clos De Vougeot  
 11 BTS. *Estimate* \$2,091 – \$3,485

**134 MOILLARD-GRIVOT 1969** (1)  
 Vosne-Romanee Malconsorts  
**NICOLAS 1976** (1)  
 Santenay Les Gravieres  
 4CM  
**ODOUL-COQUARD 2012** (4)  
 Morey St Denis Clos De La Riotte  
 6 BTS. *Estimate* \$828 – \$1,380

**135 ROPITEAU FRERES 1949** (1)  
 Hospices De Beaune  
 5CM  
**SICHEL 1969** (1)  
 Clos Du Vougeot  
**VINCENT GIRARDIN 2010** (2)  
 Chassagne-Montrachet La Garenne  
**VINCENT GIRARDIN 2010** (2)  
 Chassagne-Montrachet Le Cailleret  
**VINCENT SAUVESTRE 2005** (3)  
 Corton Marechaudes  
 9 BTS. *Estimate* \$1,762 – \$2,936

**136 BONNEAU DU MARTRAY 2000** (5)  
 Corton Charlemagne  
 5 BTS. *Estimate* \$1,524 – \$2,540  
**137** 5 BTS. *Estimate* \$1,524 – \$2,540  
**138** 7 BTS. *Estimate* \$2,134 – \$3,556

## Champagne

**139 MOET & CHANDON 1978** (2 mags.)  
 Dom Perignon  
 2 MAGS. *Estimate* \$2,862 – \$4,770

**140 MOET & CHANDON 1990** (2)  
 Dom Perignon  
 RP = 96; The profoundly rich 1990 Dom Perignon is a creamy-textured, full styled offering that loses none of its elegance in spite of its flavor authority. It will improve for 5-10 years, and appears capable of surpassing the fabulous 1985 and 1982. It seems obvious that the quality of the 1990 Champagne vintage is going to be remarkable, and the world-wide demand will be unprecedented. The message - buy them now!  
 2 BTS. *Estimate* \$1,369 – \$2,282

**141 VEUVE CLICQUOT 1988** (6)  
 Vintage Brut  
 6 BTS. *Estimate* \$3,586 – \$5,976

## Cognac

- 142** **COURVOISIER NV** (1 x 700 ml.)  
Les Part Des Anges  
**COURVOISIER NV** (2)  
VS Cognac  
1 X 700 ML. & 2 BTS. *Estimate* \$1,808 – \$3,013
- 143** **CHATEAU DE MEURSAULT NV** (1)  
Marc De Chateau - 10 Year  
**GASTON DE LAGRANGE NV** (1)  
VS Cognac  
**HINE 1988** (1)  
Grande Champagne Cognac - Bottled 2006  
**MARCEL RAGNAUD NV** (1)  
Reserve Speciale  
**ROUYER-GUILLET 1893** (1 x 700 ml.)  
Cognac (Vintage Label Missing)  
1 X 700 ML. & 4 BTS. *Estimate* \$1,120 – \$1,866

## Languedoc

- 144** **DOMAINE CLAVEL 1999** (2)  
Coteaux Du Languedoc  
**DOMAINE SARDA-MALET 2002** (1)  
Côtes Du Roussillon  
**DOMAINE SARDA-MALET RESERVE 2003** (1)  
Côtes Du Roussillon  
**MAS DE DAUMAS GASSAC 2001** (2)  
Coteaux Du Languedoc  
**MOSSE 1990** (1)  
Rivesaltes  
7 BTS. *Estimate* \$780 – \$1,300

## Loire Valley

- 145** **MOULIN TOUCHE 1964** (1)  
Anjou  
**PASCAL JOLIVET 2000** (2)  
Sancerre La Grande Cuvée  
**DOMAINE LES GRANDES VIGNES 1997** (1)  
Bonnezeaux Vaillant  
**CHATEAU-FUISSE 1999** (1)  
Pouilly Fuisse Vieilles Vignes  
5 BTS. *Estimate* \$585 – \$975

## Rhône Valley

- 146** **ALAIN GRAILLOT 1995** (1)  
Crozes Hermitage  
**ALAIN GRAILLOT 1996** (2)  
Crozes Hermitage  
**ANCIEN DOMAINE DES PONTIFS 1998** (1)  
Châteauneuf-Du-Pape  
**BEAUDEFOND 1994** (1)  
Hermitage  
**BELLE PERE ET FILS 1992** (1)  
Cuvée Louis Belle Crozes Hermitage  
**CAVE DE TAIN L'HERMITAGE 1995** (1)  
Cornas  
**CAVE DE TAIN L'HERMITAGE 1990** (1)  
Crozes Hermitage  
**CAVE DE TAIN L'HERMITAGE NV** (1)  
Crozes Hermitage  
**CHARBONNIER 1994** (3)  
Châteauneuf-Du-Pape Cuvée Vieilles Vignes  
12 BTS. *Estimate* \$921 – \$1,535

**147 CHATEAU DE BEAUCASTEL 1990 (5)**  
Châteauneuf-Du-Pape

RP = 96; Two great back to back vintages are the 1990 and 1989. The more developed 1990 boasts an incredible perfume of hickory wood, coffee, smoked meat, Asian spices, black cherries, and blackberries. Lush, opulent, and full-bodied, it is a fully mature, profound Beaucastel.

**CHATEAU DE BEAUCASTEL 1995 (1)**  
Châteauneuf-Du-Pape

6 BTS. *Estimate \$1,919 – \$3,199*

**148 CHATEAU DE BEAUCASTEL 2001 (7)**  
Châteauneuf-Du-Pape

RP = 96; Beaucastel has been on a terrific qualitative roll over the last four vintages, and the 2001 Chateauneuf du Pape (which Francois Perrin feels is similar to the 1990, although I don't see that as of yet) is a 15,000-case blend of 30% Grenache, 30% Mourvedre, 10% Syrah, 10% Cunoise, and the balance split among the other permitted varietals of the appellation. This inky/ruby/purple-colored cuvee offers a classic Beaucastel bouquet of new saddle leather, cigar smoke, roasted herbs, black truffles, underbrush, and blackberry as well as cherry fruit. It is a superb, earthy expression of this Mourvedre-dominated cuvee. Full-bodied and powerful, it will undoubtedly close down over the next several years, not to re-emerge for 7-8 years.

7 BTS. *Estimate \$1,432 – \$2,387*

**149** 7 BTS. *Estimate \$1,432 – \$2,387*

**150 CHATEAU DE BEAUCASTEL 2001 (1 mag.)**  
Châteauneuf-Du-Pape  
**CHATEAU DE BEAUCASTEL 2003 (1)**  
Châteauneuf-Du-Pape  
**CHATEAU DE BEAUCASTEL 2012 (2)**  
Châteauneuf-Du-Pape

3 BTS. & 1 MAG. *Estimate \$705 – \$1,175*

**151 GUIGAL 1997 (1)**  
Côte Rotie Chateau D'Ampuis  
**CHATEAU FORTIA 2001 (6)**  
Châteauneuf-Du-Pape Cuvée Du Baron

7 BTS. *Estimate \$721 – \$1,201*

**152 CHATEAU LA NERTHE 1998 (1)**  
Châteauneuf-Du-Pape  
**CHATEAU LA NERTHE 2000 (1)**  
Châteauneuf-Du-Pape  
**CHATEAU LA NERTHE 1999 (2)**  
Cuvée Des Cadettes  
**CHATEAU LA VERRERIE 2004 (1)**  
Grand Deffand Luberon Syrah  
**CLOS DES PAPES 1993 (1)**  
Châteauneuf-Du-Pape  
**COS DE L'ORATOIRE DES PAPES 1999 (1)**  
Châteauneuf-Du-Pape

7 BTS. *Estimate \$690 – \$1,150*

**153 COUDOULET DE BEAUCASTEL 2003 (3)**  
Côtes Du Rhone  
**COUDOULET DE BEAUCASTEL 2004 (3)**  
Côtes Du Rhone  
**COUDOULET DE BEAUCASTEL 2007 (3)**  
Côtes Du Rhone

9 BTS. *Estimate \$693 – \$1,155*

**154 DELAS 2009 (1 mag.)**  
Côte Rotie La Landonne  
**DOMAINE COURBIS 2001 (3)**  
Cornas Champelrose  
**DOMAINE DE FONT-SANE 1999 (3)**  
Châteauneuf-Du-Pape  
**DOMAINE DE FONT-SANE 2004 (1)**  
Châteauneuf-Du-Pape  
**DOMAINE DE HAUTES CANCES 2005 (2)**  
Cairanne

9 BTS. & 1 MAG. *Estimate \$1,180 – \$1,966*

**155 PIERRE AMADIEU 2009 (1)**  
 Gigondas Grand Romane Vieilles Vignes  
**DOMAINE DE LA SOLITUDE 1994 (1)**  
 Châteauneuf-Du-Pape  
**DOMAINE DES AMADIEU 1999 (1)**  
 Cairanne Cuvée Vieilles Vignes  
**DOMAINE DES AMADIEU 1999 (1)**  
 Cairanne  
**DOMAINE DU PEGAU 1993 (1)**  
 Châteauneuf-Du-Pape Reservee  
**DOMAINE FOND CROZE 2005 (2)**  
 Côtes Du Rhone Cuvée Shyrus  
**DOMAINE FOND CROZE 2004 (1)**  
 Côtes Du Rhone Villages  
 Cuvée Vincent De Catari  
**DOMAINE GRAMENON 1995 (2)**  
 Côtes Du Rhone  
**DOMAINE GRAMENON 1997 (1)**  
 Côtes Du Rhone  
**DOMAINE LA BOUISSIERE 1998 (2)**  
 Gigondas  
**DOMAINE LES HAUTES CANCES 2005 (1)**  
 Côte Du Rhone  
**DOMAINE PONTIFICALE 2000 (1)**  
 Châteauneuf-Du-Pape

15 BTS. *Estimate \$920 – \$1,534*

**156 E.GUIGAL 1999 (2)**  
 Côte Rotie La Mouline

RP = 100; The 1999 Cote Rotie la Mouline is straight-up awesome on all accounts. Drinking beautifully, with explosive aromas and flavors of blackberry, smoked meats, pepper and exotic flowers, this puppy hits the palate with full-bodied richness, beautiful concentration and a seamless, sexy and oh, so fine texture that is the hallmark of this cuvee. This is another wine that will continue to evolve gracefully, yet I've been lucky enough to have it multiple times recently, and when a bottle is drinking this good, don't miss it by always waiting for another day.

2 BTS. *Estimate \$3,079 – \$5,132*

**157 E.GUIGAL 1999 (2)**  
 Côte Rotie La Turquie

RP = 100; The 1999 Cote Rotie La Turquie reveals notes of toasty vanilla and espresso in addition to Asian spices, mocha, pepper, blackberries, creosote, and roasted meats. The exotic perfume is followed by a wine with phenomenal intensity, sweet, well-integrated tannin, huge body, and loads of concentrated fruit. It is a tour de force in winemaking. What is so remarkable about this cuvee is its tremendous layers of flavor, awesome texture, and perfect balance. This is an astonishing offering from one of the world's greatest winemakers.

2 BTS. *Estimate \$3,366 – \$5,610*

**158 2 BTS. *Estimate \$3,366 – \$5,610***

**159 ELISABETH CHAMBELLAN 1997 (1)**  
 Châteauneuf-Du-Pape Vieilles Vignes  
**GUIGAL 1994 (1)**  
 Gigondas  
**GUIGAL 2006 (1)**  
 Gigondas  
**JEAN MARIE ARNOUX 2010 (1)**  
 Vacqueyras  
**LA FERME DU MONT 2007 (1)**  
 Côtes Du Rhone Villages Le Ponnant  
**LA VIELLE FERME 1993 (5)**  
 Côtes Du Rhone  
**L'ORATOIRE 1997 (1)**  
 Châteauneuf-Du-Pape

11 BTS. *Estimate \$391 – \$652*

**160 M CHAPOUTIER 1995 (2)**  
 Cote Rotie  
**M CHAPOUTIER 1991 (2)**  
 Cote Rotie Brune Et Blonde  
**M CHAPOUTIER 1994 (2)**  
 Crozes Hermitage Les Meysonniers  
**M. CHAPOUTIER 1985 (1)**  
 Hermitage

7 BTS. *Estimate \$866 – \$1,444*





**161 PAUL JABOULET 1994** (1)  
Crozes Hermitage Domaine De Thalabert  
**PAUL JABOULET 2003** (1)  
Crozes Hermitage Domaine De Thalabert  
**PAUL JABOULET 1996** (1)  
Saint Joseph Le Grand Pompee  
**PERRIN & FILS 2009** (7)  
Vinsobres Les Cornuds  
  
10 BTS. *Estimate* \$504 – \$840

**162 PIERRE AMADIEU 1998** (2)  
Gigondas Romane Machotte  
**ROBERT ET PATRICK JASMIN 1998** (2)  
Cote Rotie  
**STEPHAN ROBERT 2005** (1)  
Cornas Domaine Du Tunnel  
**VIEUX TELEGRAPHE 1988** (1)  
Châteauneuf-Du-Pape La Crau  
**VIEUX TELEGRAPHE 1995** (1)  
Châteauneuf-Du-Pape La Crau  
  
7 BTS. *Estimate* \$989 – \$1,649

## Germany

**163 BALTHASAR RESS 1983** (1)  
Rudesheimer Burgweg Spatlese  
Riesling  
**BURKLIN WOLF 1988** (1)  
Forster Mariengarten Kabinett  
Riesling  
**BURKLIN WOLF 1976** (1)  
Wachenheimer Luginsland Auslese  
Riesling  
**D VAN VOLXEM 1975** (1)  
Scharzhofberger  
Riesling  
**DARTING 1997** (1)  
Urgesteiner Herrenberg Auslese  
Riesling  
**DEINHARD 1976** (1)  
Mittelheimer St Nikolaus  
Riesling  
  
6 BTS. *Estimate* \$824 – \$1,374

**164 EGON MULLER 1998** (5)  
Scharzhofberger Kabinett  
Riesling  
  
5 BTS. *Estimate* \$885 – \$1,475

**165 JJ PRUM 1992** (2)  
Whelener Sonnenuhr Kabinett  
Riesling  
**JOSEF HOFER 1976** (1)  
Winzenheimer Berg Auslese  
Riesling  
**LEONARD KREUSCH TRIER 1976** (1)  
Schloss Johannisberger Rosalack Auslese  
Riesling  
**MAX FERD RICHTER 1983** (1)  
Brauneberger Juffer Spatlese  
Riesling  
**PETER SCHERF 1983** (1)  
Kaseler Nies'Chen Auslese  
Riesling  
**SA PRUM ERBEN 1976** (1)  
Wehlener Sonnenuhr  
Riesling  
**SCHLOSS SCHONBORN 1971** (1)  
Hattenheimer Nussbrunnen Beerenauslese  
Riesling  
**SIMMERN 1976** (1)  
Rattenheimer Mannberg Beerenauslese  
Riesling  
**WINZERVEREIN MECKENHEIM 1992** (1 hf. bt.)  
Medenheimer Beerenauslese  
Gewurztraminer  
  
1 HF. BT. & 9 BTS. *Estimate* \$1,588 – \$2,647

## Hungary

- 166 CH DE SAROSPATAK 1988** (1 x 500 ml.)  
Aszu Eszencia  
Tokay  
**DISZNOKO 1988** (1 x 500 ml.)  
Aszu Eszencia  
Tokay  
**HUNGAROVIN 1964** (2 x 500 ml.)  
Aszu Essencia  
Tokay  
**ROYAL TOKAJI WINE 1991** (1 x 500 ml.)  
5 Puttonyos  
Tokay
- 5 x 500 ML. *Estimate \$1,195 – \$1,991*

## Italy

- 167 CANTINA TOLLO 2008** (2)  
Fantini Montepulciano D'Abruzzo Riserva  
**FARNESE 2011** (4)  
Edizione Cinque Autoctoni  
**ILLUMINATI 1997** (2)  
Montepulciano D'Abruzzo  
**VILLA NANNI 1995** (1)  
Biferno  
**PELISSERO 2006** (2)  
Long Now Langhe Rosso  
**ENOLOGICA VALTELLINA 1970** (1)  
Sassella Valtellina Superiore Riserva
- 12 BTS. *Estimate \$788 – \$1,313*

## 168 ALDO CONTERNO 2000 (1)

Barolo Gran Bussia Riserva

RP = 93; The 2000 Barolo Granbussia is the freshest of these 2000 Baroli from Aldo Conterno. Pretty floral notes meld into a generous core of fruit in this open, generous Granbussia.

## AURELIO SETTIMO 1996 (1)

Barolo Rocche

## BATASIOLO 1988 (1)

Barolo La Corda Della Briccolina

## CAVALLOTTO 2004 (1)

Barolo Riserva Bricco Boschis

## MARCHESI DI GRESY 1997 (1)

Barbaresco Gaiun Martinenga

## PRODUTTORI DEL BARBARESCO

## ET FILS 1990 (1)

Asili

6 BTS. *Estimate \$1,672 – \$2,786*

Lot 169



**169 GAJA 2000** (1 mag.)

Darmagi

**GAJA 2000** (1 mag.)

Barbaresco Sori San Lorenzo

RP = 95; The 2000 Sori San Lorenzo is another of the standouts of the year. It remains quite youthful, with notable energy in its dark, brooding fruit and considerable tannin. Despite its sheer power, the 2000 isn't as explosive as it can be. Still, there is little doubt the 2000 Sori San Lorenzo has the stuffing to age well for many years to come.

2 MAGS. *Estimate* \$2,025 – \$3,375

**170 HASTAE 1998** (1)

Quorum

**CORDERO DI MONTEZEMOLO 1988** (1)

Barolo Monfalleto

**CORDERO DI MONTEZEMOLO 1990** (1)

Barolo Monfalleto

**CORDERO DI MONTEZEMOLO 1998** (1)

Barolo Monfalleto

**PALLADINO 2007** (1)

Barolo Parafada

**PIO CESARE 1990** (1)

Barolo Ornato

**BARBARESCO PRUNOTTO 1997** (2)

Bric Turot

**RENATO RATTI 1983** (2)

Barolo Marcenasco

10 BTS. *Estimate* \$1,747 – \$2,912

**171 ROBERTO VOERZIO 2001** (1)

Barolo Brunate

RP = 93; The 2001 Barolo Brunate emerges from the glass with sweet mentholated, floral aromas and flavors. In 2001 the Brunate is quite a bit fresher than the Rocche. It possesses striking delineation and more than enough mid-palate density to drink well for a number of years. The Brunate is at the early part of its drinking window now that it has developed a measure of aromatic complexity while remaining vibrant.

**ROBERTO VOERZIO 2001** (1)

Barolo Cerequio

RP = 95; The 2001 Barolo Cerequio comes across as rich, round, seamless and pretty. Here, too, the aromas and flavors are just a bit forward, but there is more than enough density to support another decade of aging. The wine comes together beautifully with time in the glass. Sweet rose petals, spices and licorice wrap around the big, seamless finish.

**ROBERTO VOERZIO 2001** (1)

Barolo La Serra

RP = 92; The 2001 Barolo La Serra opens with a deep, potent nose of sweet dark cherries and cocoa. The most structured of the Voerzio Barolos, it is also the most weighty and concentrated, featuring massive amounts of dark, backward fruit, great length and the more substantial tannins that are typical of the vineyard. La Serra is usually one of the last wines to reach maturity.

**ROBERTO VOERZIO 2001** (1)

Barolo Rocche Dell Annuziata Torriglione

**ROBERTO VOERZIO 1990** (2)

Barolo Vigna Serra

6 BTS. *Estimate* \$1,659 – \$2,765

**172** **ALBINO ROCCA 1996** (1)  
 Barbaresco Vigneto Brich Ronchi  
**SEGHESIO 1996** (2)  
 Barolo La Villa  
**CERETTO VIGNETTO ZONCHETTA 1978** (2)  
 Barolo Brunate  
 5 BTS. *Estimate \$864 – \$1,440*

**173** **CANTINE DE FALCO 2008** (3)  
 Salore Salice Salentino  
**CANTINE DUE PALME NV** (1)  
 Canonico Salento  
**MASSERIE PISARI 2010** (1)  
 Primitivo Salento  
**MESSAPICUS SALICE SALENTINO NV** (1)  
 Salice Salentino  
**PICCHIERINI 2007** (2)  
 Primitivo Manduria  
**PICHIERRI 1996** (1)  
 Vermiglio Primitivo Del Tarantino  
**VALLONE 2001** (3)  
 Salice Salentino  
 12 BTS. *Estimate \$262 – \$437*

**174** **SELLA MOSCA 2011** (3)  
 Monteoro Vermentino Gallura Superiore  
**SELLA & MOSCA 1992** (2)  
 Cannonau Di Sardegna  
**GIORDANO 2008** (1)  
 Nero D'Avola  
**ANTINORI 2008** (1)  
 Brunello Di Montalcino  
**ANTINORI 1994** (1)  
 Tignanello  
 8 BTS. *Estimate \$493 – \$821*

**175** **CONTI COSTANTI 1998** (1)  
 Ardingo  
**ARGIANO 1990** (1)  
 Brunello Di Montalcino  
**ARGIANO 1997** (3)  
 Solengo  
 5 BTS. *Estimate \$785 – \$1,308*

**176** **AVIGNONESI NV** (1)  
 Vino Nobile Di Montepulciano  
**BANFI 1985** (1)  
 Brunello Di Montalcino Poggio Alle Mura  
**CASTELLANI NV** (1)  
 Sommavite  
**CASTELLO DI VOLPAIA 1997** (1)  
 Chianti Classico  
**MAZZEI FONTERUTOLI 2003** (1)  
 Chianti Classico  
**LEONE DE CASTRIS 2009** (1)  
 Salice Salentino  
**FELSINA 1990** (1)  
 Berardenga Chianti Classico Riserva  
**L'FILIGARE 2008** (1)  
 Chianti Classico Lorenzo  
**FONTODI 2006** (1)  
 Chianti Classico  
**FRANCESCO CANDIDO 2000** (1)  
 Salice Salentino Riserva  
 10 BTS. *Estimate \$445 – \$742*

**177** **FATTORIA DEI BARBI 1995** (1)  
 Brunello Di Montalcino  
**FATTORIA DEI BARBI 1990** (2)  
 Brunello Di Montalcino  
 3 BTS. *Estimate \$349 – \$581*

**178** **PODERE IL CARNASCIALE 2001** (2 mags.)  
 Il Caberlot IGT Toscana  
 2 MAGS. *Estimate \$1,127 – \$1,878*



- 179 ISOLE E OLENA 1996** (3)  
Cepparello  
**ISOLE E OLENA 1997** (1)  
Cepparello  
4 BTS. *Estimate* \$793 – \$1,322
- 180 LUPICAIA 1998** (6)  
Castello Del Terriccio  
6 BTS. *Estimate* \$1,426 – \$2,376
- 181 MARCHESE ANTINORI 2010** (12)  
Chianti Classico Riserva  
12 BTS. *Estimate* \$1,138 – \$1,896
- 182 TENUTA DELL' ORNELLAIA 1997** (3)  
Masseto  
3 BTS. *Estimate* \$4,378 – \$7,296
- 183 MICHELE SATTA 1998** (4)  
Cavaliere  
4 BTS. *Estimate* \$511 – \$852
- 184 MORIS FARMS 1997** (10)  
Avvoltore  
10 BTS. *Estimate* \$1,278 – \$2,130
- 185 TENUTA DELL' ORNELLAIA 1998** (2)  
Ornellaia  
RP = 93; Made in a relatively structured style for the normally succulent Ornellaia, the dense saturated ruby/purple-colored 1998 offers up aromas of pain grille, spice, smoke, black fruits, and graphite. Full-bodied, concentrated, exceptionally pure, and long. Very impressive, but it requires patience.  
2 BTS. *Estimate* \$830 – \$1,384

- 186 TENUTA DELL' ORNELLAIA 2013** (6)  
Ornellaia  
OWC  
RP = 96; This wine will be released in May 2016. The 2013 Bolgheri Superiore Ornellaia is an integrated and seamless blend of Cabernet Sauvignon, Cabernet Franc, Merlot and Petit Verdot. Alex Heinz tells me that 2013 was a difficult vintage especially towards the early part of the growing season. It balanced out during the summer and allowed for steady ripening of fruit before the harvest. But 2013 was not as hot as 2011 and 2012 overall, and this edition of Ornellaia is beautifully tonic and shapely as a result. The bouquet is very developed in terms of aromas this year with beautiful notes of dark fruit, tobacco and spice. Those perfumes are just gorgeous. The mouthfeel is similarly intense with tannins that are still young, but are already silky and linear in nature. This vintage promises a long aging future.  
6 BTS. *Estimate* \$1,685 – \$2,808
- 187 PAGLIARESE 1990** (2)  
Chianti Classico  
**RUFFINO 1993** (1)  
Riserva Ducale Chianti Classico  
**SAN FELICE 1990** (2)  
Campogiovanni Brunello Di Montalcino  
5 BTS. *Estimate* \$702 – \$1,170

- 188 ALLEGRINI 2000** (2)  
Palazzo Della Torre  
**ALLEGRINI 1990** (1)  
Valpolicella Amarone Classico Superiore  
**ANSELMi 2005** (1)  
Soave Capitel Croce  
**CANTINA DI NEGRAR 1990** (1 d. mag.)  
Amarone Della Valpolicella Classico  
**MARIN DELLA CORTE 1998** (1)  
Amarone Della Valpolicella Classico  
**MASI 2009** (1)  
Amarone Valpolicella Classico Campolongo Di Torbe  
**MASI 1983** (1)  
Recioto Amarone Campolongo Di Torbe 4CM  
  
7 BTS. & 1 D. MAG. *Estimate* \$1,068 – \$1,780
- 189 QUINTARELLI 1995** (2)  
Amarone Valpolicella Classico Superiore  
  
VM = 95; Sweet dried cherries, tobacco, licorice and that inimitable Quintarelli sweetness all take shape in the glass. The 1995 Amarone is constantly changing, and while this bottle is striking, it also falls just a bit short of the very best examples. Still, that is a quibble, as the 1995 Amarone is fantastic. The roasted striped bass has more than enough texture and richness to stand up to these gorgeous wines.  
  
2 BTS. *Estimate* \$1,921 – \$3,202

- 190 QUINTARELLI 2005** (1)  
Primofiore  
**QUINTARELLI 1990** (2)  
Valpolicella Classico Superiore  
**QUINTARELLI 1991** (2)  
Valpolicella Classico Superiore  
**QUINTARELLI 1992** (2)  
Valpolicella Classico Superiore  
**QUINTARELLI 1993** (1)  
Valpolicella Classico Superiore  
  
8 BTS. *Estimate* \$2,289 – \$3,815
- 191 SPERI 1990** (1)  
Amarone Valpolicella Classico 3CM  
**TEDESCHI 1988** (1)  
Amarone Recioto Valpolicella  
**TEDESCHI 1976** (1)  
Amarone Recioto Valpolicella  
**TEDESCHI 1983** (1)  
Amarone Recioto Valpolicella  
**ZENATO 2008** (2)  
Amarone Valpolicella Classico  
**ZENATO 2007** (1)  
Ripasso Valpolicella Superiore  
  
7 BTS. *Estimate* \$1,138 – \$1,897

## Portugal

- 192 CHURCHILL'S 1991** (12)  
Vintage Port  
12 BTS. *Estimate* \$2,038 – \$3,396
- 193** 12 BTS. *Estimate* \$2,038 – \$3,396
- 194** 12 BTS. *Estimate* \$2,038 – \$3,396
- 195 DALVA 1977** (1)  
Vintage Port  
**FERREIRINHA 1982** (1)  
Barca Velha  
**FONSECA 1994** (1)  
Vintage Port
- RP = 97; One of the most spectacular 1994s, this opaque purple-colored wine is an exotic, flamboyant, ostentatious port. Extremely fragrant and pungent, with a flashy display of jammy cassis, pepper, licorice, and truffles, this port is an attention-grabber. Awesomely rich, and full-bodied, with superb length, richness, and overall balance, it possesses a huge mid-palate, layers of flavor, an unctuous texture, and a blockbuster finish. Everything is in place, with the brandy and tannin well-integrated, even concealed by the masses of fruit and glycerin. This wine will drink fabulously well at age ten, but keep for up to thirty years.
- GONZALEZ-BYASS 1970** (1)  
Vintage Port  
4 BTS. *Estimate* \$1,001 – \$1,668

- 196 TAYLOR FLADGATE 2011** (4 d. mags.)  
Vintage Port

RP = 96-98; The 2011 Taylor's Vintage 2011 has a multifaceted, Pandora's Box of a nose that is mercurial in the glass: cassis at first before blackberry and raspberry politely ask it to move aside, followed by wilted rose petals and Dorset plum. Returning after one 45 minutes that nose has shut up shop. The palate is sweet and sensual on the entry, plush and opulent, with copious black cherries, boysenberry and cassis fruit, curiously more reminiscent of Fonseca! It just glides across the palate with a mouth-coating, glycerine-tinged finish that has a wonderful lightness of touch, demonstrating how Vintage Port is so much more accessible in its youth nowadays. But don't let that fool you into dismissing the seriousness or magnitude of this outstanding Taylor's.

4 D. MAGS. *Estimate* \$1,495 – \$2,492

## Whisky

- 197 BRUICHLADDICH DISTILLERY**  
**12 YEAR OLD** (3)  
Friends Of Scotch Whiskey -  
The Bourbon Unity  
3 BTS. *Estimate* \$720 – \$1,200
- 198 BRUICHLADDICH DISTILLERY**  
**12 YEAR OLD** (6)  
Friends Of Scotch Whiskey -  
The Sherry Unity  
6 BTS. *Estimate* \$1,440 – \$2,400

**199**     **SPRINGBANK 12 YEAR OLD** (1)  
Whisky  
**SPRINGBANK 21 YEAR OLD** (1)  
Whisky  
**SPRINGBANK 25 YEAR OLD** (1)  
Whisky  
  
3 BTS.                      *Estimate* \$1,376 – \$2,294

**199A**    **SPRINGBANK 12 YEAR OLD** (1)  
Whisky  
  
1 BT.                      *Estimate* \$138 – \$230

**199B**    **SPRINGBANK 21 YEAR OLD** (1)  
Whisky  
  
1 BT.                      *Estimate* \$516 – \$860

**199C**    **SPRINGBANK 25 YEAR OLD** (1)  
Whisky  
  
1 BT.                      *Estimate* \$722 – \$1,204

## South Africa

**200**     **CONSTANTIA GLEN 2007** (2)  
Red Blend  
**FLEUR DU CAP 2008** (1 hf. bt.)  
Memokelders  
White Blend  
**FLEUR DU CAP 2008** (1 hf. bt.)  
Nobel Late Harvest  
White Blend  
**JARDIN 1999** (1)  
Merlot  
**RUSTENBERG 2011** (1)  
Shiraz  
**KLEIN CONSTANTIA 1994** (1)  
Vin De Constance  
  
2 HF. BTS. & 5 BTS.     *Estimate* \$415 – \$691

## Spain

**201**     **GONZALEZ-BYASS NV** (1 x 500 ml.)  
Lepanto Xeres  
Brandy  
**MONTILLA MORILES NV** (11 hf. bts.)  
Alvear Solera 1927  
Pedro Ximinez  
**EMILIO LUSTAU NV** (1 hf. bt.)  
Arcos East Indian Sherry  
Sherry  
**GONZALES BYASS NV** (1 hf. bt.)  
Matusalem Oloroso Dulce Muy Viejo  
Sherry  
  
13 HF. BTS. & 1 x 500 ML.  
*Estimate* \$779 – \$1,299

**202** **ALVARO PALACIOS 1997** (1 jero.)  
L'Ermita  
  
1 JERO. *Estimate* \$3,772 – \$6,286

**203** **DON JACOBO 2005** (1)  
Rioja  
**FAUSTINO I 2001** (1)  
Rioja Gran Reserva  
**FAUSTINO 1987** (1)  
Rioja Gran Reserva  
3CM  
**MARQUES DE ELCIEGO 1990** (1)  
Rioja  
**MUGA 2010** (5)  
Rioja Selection Special  
Tempranillo  
  
9 BTS. *Estimate* \$610 – \$1,017

**204** **REMELLURI 1989** (1)  
Rioja Gran Reserva  
**REMELLURI 1994** (2)  
Rioja  
**BODEGAS Y VINEDOS 2008** (5)  
Pintia  
  
8 BTS. *Estimate* \$1,091 – \$1,819

## United States

**205** **BERINGER 1993** (1)  
Knights Valley  
Alluvium Red  
**BERINGER 2008** (2)  
Napa Valley  
Cabernet Sauvignon  
**BERINGER 1992** (3)  
Knights Valley  
Cabernet Sauvignon  
**BERINGER 1984** (1)  
Napa Valley  
Private Reserve  
Cabernet Sauvignon  
**BERINGER 1996** (1)  
Napa Valley  
Private Reserve  
Cabernet Sauvignon  
  
8 BTS. *Estimate* \$1,454 – \$2,424

**206** **CAKEBREAD CELLARS 2013** (1)  
Napa Valley  
Cabernet Sauvignon  
**CAYMUS 1992** (2)  
Napa Valley  
Cabernet Sauvignon  
**CAYMUS 1993** (2)  
Napa Valley  
Cabernet Sauvignon  
**CAYMUS 1997** (1)  
Napa Valley  
Zinfandel  
  
6 BTS. *Estimate* \$890 – \$1,483



**207 CHATEAU MONTELENA 1990 (1)**

Napa Valley  
Montelena Estate  
Cabernet Sauvignon

**CLOS PEGASE 1998 (1)**

Palisades Vineyard  
Cabernet Sauvignon

**CONN VALLEY VINEYARDS 1998 (1)**

Napa Valley  
Chardonnay

**CRICHTON HALL 1994 (1)**

Napa Valley  
Merlot

**DALLA VALLE 1999 (1)**

Napa Valley  
Cabernet Sauvignon

RP = 94; The opaque purple-colored 1999 Cabernet Sauvignon boasts exceptionally sweet fruit as well as a tell-tale perfume of melted licorice, black currant liqueur, and hints of blueberries and flowers. This wine is long, ripe, and full-bodied, with the vintage's more noticeable, astringent tannin.

**DALLA VALLE 2001 (1)**

Napa Valley  
Cabernet Sauvignon

RP = 94+; Two terrific wines from Dalla Valle, the 2001 Cabernet Sauvignon (a blend of 85% Cabernet Sauvignon and 15% Cabernet Franc) from their hillside vineyards in Oakville, exhibits a dense purple color along with a beautifully sweet perfume of cedarwood, creme de cassis, incense and spice box. Full-bodied and rich with gorgeous purity and texture as well as a multidimensional mouthfeel, it still has some tannins to shed and tastes like it is only 4-5 years old.

**DALLA VALLE 2002 (1)**

Napa Valley  
Cabernet Sauvignon

RP = 97; The sensational 2002 Cabernet Sauvignon is a blend of 90% Cabernet Sauvignon and 10% Cabernet Franc from the red soils of their vineyards planted in the Oakville Corridor on the eastern hillsides overlooking the valley floor vineyards of Screaming Eagle and Rudd Estate. A dense ruby/purple color is followed by aromas and flavors reminiscent of a 4-to-5 year-old wine rather than one that has already hit a decade of age. In fact, it probably needs another 5-10 years of cellaring and should keep for 20-25 more years. It is another example of what will one day be regarded as the "golden age" of Napa Valley for the progress in quality and the world class wines that were produced. A wine of great stature and majesty, the youthful 2002 exhibits sweet licorice, creme de cassis, incense and graphite aromas, and is bursting with potential. Despite the fact that I have given Dalla Valle's wines fabulous reviews over the last 20 years, looking back, I seriously underrated the 2002s seven years ago. Both of these cuvees are among the superstars of this tasting. Their youthfulness, combined with their undeniable complexity and richness, is provocative.

7 BTS.

*Estimate* \$1,450 – \$2,416

**208 DAVID ARTHUR 2001 (2)**

Napa Valley  
Meritage

**DAVID ARTHUR 2000 (1)**

Napa Valley  
Cabernet Sauvignon

3 BTS.

*Estimate* \$526 – \$876

**209 CHRISTIAN MOUEIX 1990 (1)**

Napa Valley

Dominus

RP = 98; This spectacularly complex, rich wine magically combines the finest elements of Napa Valley (strength, ripeness, and full body) with those of Bordeaux (finesse, elegance, and complexity). The opaque dark ruby/purple color suggests considerable intensity, low yields, and great richness. A huge, soaring bouquet offers aromas of cassis, black-cherries, subtle herbs, vanillin, and spices. This full-bodied, voluptuously-textured, super-concentrated, multi-dimensional wine is more flattering and opulent than previous Dominus vintages, which tended to be tannic as well as rich. Although approachable and already complex (I have already consumed three bottles), the magnificent 1990 Dominus should evolve gracefully for 20-30 years. The 1990 is the finest wine Christian Moueix and his partners, Robin Lail and Marci Smith, have produced, although the 1991, which will be released in a year, may even eclipse the 1990!

**CHRISTIAN MOUEIX 2004 (1 mag.)**

Napa Valley

Dominus

RP = 97; Like so many 2004s, the 2004 Dominus is a full-bodied wine showing brilliantly at age ten, with loads of complex cedar, kirsch, Christmas fruitcake, black currants and spice box. It has a creamy, opulent texture, but remains light on its feet. This sexy wine is showing exceptionally well and is best drunk over the next 10-15 years. Not one of the longest-lived wines from Dominus, but it is certainly at a wonderful point in its evolution right now.

1 BT. & 1 MAG. *Estimate* \$1,318 – \$2,196**210 CHRISTIAN MOUEIX 1994 (1 imp.)**

Napa Valley

Dominus

RP = 99; Christian Moueix and his talented winemaking team continue to rewrite the definition of a Napa Valley reference point wine. I have had a difficult time keeping the corks in my bottles of 1994 Dominus. Eight-thousand cases were produced from a blend of 70% Cabernet Sauvignon, 14% Cabernet Franc, 12% Merlot, and 4% Petit Verdot. In this vintage, 174 days passed between bud break and the harvest, a remarkable period of time for any wine region in the world. The 1994 is a strikingly thick, compellingly rich wine with the texture of a great Pomerol, despite being made primarily from Cabernet Sauvignon. The wine exhibits a dense purple color, and an incredibly fragrant nose of jammy black fruits, spice, smoke, and loamy, truffle-like scents. In the mouth, it is full-bodied, with thrilling levels of extract and richness, but no sense of heaviness or harshness. This seamless Dominus possesses no hard edges, as its acidity, tannin, and alcohol are beautifully meshed with copious quantities of ripe fruit. This wine offers early drinking, yet has the potential to last for 30+ years.

1 IMP. *Estimate* \$6,769 – \$11,282**211** 1 D. MAG. *Estimate* \$3,379 – \$5,632

**212 DUNN VINEYARDS 2006** (1)  
 Napa Valley  
 Howell Mountain  
 Cabernet Sauvignon  
**FIDDLEHEAD CELLARS 2001** (2)  
 728 Fiddlestix  
 Pinot Noir  
**FRANCIS FORD COPPOLA 2008** (1)  
 Alexander Valley  
 Director's Cut  
 Cabernet Sauvignon  
**FROG'S LEAP 1995** (1)  
 Napa Valley  
 Cabernet Sauvignon  
**FROG'S LEAP 1991** (1)  
 Napa Valley  
 Zinfandel  
**FROG'S LEAP 1995** (1)  
 Napa Valley  
 Zinfandel

7 BTS. *Estimate \$1,006 – \$1,676*

**213 GARGIULO VINEYARDS 2007** (1 mag.)  
 Napa Valley  
 575 0VX  
 Cabernet Sauvignon  
**GEMSTONE 1998** (1 d. mag.)  
 Napa Valley  
 Estate Red

1 MAG. & 1 D. MAG. *Estimate \$1,402 – \$2,337*

**214 GEMSTONE 2001** (1 d. mag.)  
 Napa Valley  
 Estate Red  
**GEMSTONE 2003** (1 d. mag.)  
 Napa Valley  
 Estate Red

2 D. MAGS. *Estimate \$1,388 – \$2,314*

**215 GEMSTONE 2003** (6)  
 Napa Valley  
 Estate Red

6 BTS. *Estimate \$1,768 – \$2,946*

**216 GIRARD 1993** (1)  
 Napa Valley  
 Cabernet Sauvignon  
**JOSEPH PHELPS 1990** (1)  
 Napa Valley  
 Insignia

RP = 91; The 1990 Insignia still possesses a healthy dark ruby/purple-tinged color that is just beginning to lighten at the edge. Lots of licorice, black currant, Chinese black tea, cedarwood and spice jump from the glass of this wine. It possesses lovely fruit, medium body and an elegant, pure, expressive mid-palate as well as finish.

**KENWOOD 1989** (1)  
 Napa Valley  
 Jack London Vineyard  
 Cabernet Sauvignon

3 BTS. *Estimate \$694 – \$1,157*

**217 KISTLER 1996** (1)  
 Sonoma Coast  
 Cuvée Catherine  
 Pinot Noir  
**KISTLER 2004** (1)  
 Sonoma Coast  
 Cuvée Elisabeth  
 Pinot Noir  
**KISTLER 1998** (1)  
 Sonoma Coast  
 Cuvée Elisabeth  
 Pinot Noir  
**KISTLER 1999** (2)  
 Sonoma Coast  
 Cuvée Elisabeth  
 Pinot Noir  
**KISTLER 2000** (1)  
 Sonoma Coast  
 Cuvée Elisabeth  
 Pinot Noir

6 BTS. *Estimate \$3,056 – \$5,094*

**218 MAYBACH 2007 (1)**

Materium

RP = 99; The prodigious 2007 Materium exhibits an even more opaque purple color, and ratchets up the level of intensity and aromatic complexity. Blackberry, black raspberry, blueberry, and cassis aromas intermixed with notes of crushed rocks, spring flowers, and toasty new oak are found in this beauty. Outstanding intensity along with full-bodied power and beautifully integrated acids, tannins, alcohol, and wood.

**MAYBACH 2008 (1)**

Materium

RP = 96; The 2008 Materium comes from a single block called the Weitz Vineyard at a 1,000-foot elevation on the eastern hillsides of Oakville. It would be hard to improve upon the virtually perfect 2007, but the 2008 is not far behind. Notes of graphite, blueberry, charcoal, spring flowers, and some background oak are followed by a dense, purple-colored wine with full-bodied power, great elegance, precision, and purity. This is again an extraordinary effort from Maybach.

2 BTS. *Estimate \$1,337 – \$2,229***219 MERUS 2001 (3)**

Napa Valley

Cabernet Sauvignon

**MERUS 2002 (1)**

Napa Valley

Cabernet Sauvignon

**MERUS 2003 (1 mag.)**

Napa Valley

Cabernet Sauvignon

**MERUS 2004 (1)**

Napa Valley

Cabernet Sauvignon

5 BTS. & 1 MAG. *Estimate \$1,716 – \$2,860***220 ROBERT MONDAVI 1990 (2)**

Napa Valley

Unfiltered Cabernet Sauvignon

**NAPA RIDGE 1995 (1)**

North Coast

Pinot Noir

**NAPA RIDGE 1996 (1)**

North Coast

Pinot Noir

**PAHLMAYER 1989 (2)**

Napa Valley

Caldwell Vineyard

**PAHLMAYER 1990 (1)**

Napa Valley

Caldwell Vineyard

7 BTS. *Estimate \$1,244 – \$2,073***221 RAVENSWOOD 1995 (3)**

Zinfandel

**RH PHILLIPS 1996 (1)**

Night Harvest Mistura

**RIDGE 2000 (1)**

Alexander Valley

Geyserville

**RIDGE 1982 (1)**

Napa Valley

Howell Mountain

Zinfandel

**RIDGE 1992 (1)**

Santa Cruz Mountains

Cabernet Sauvignon

**ROBERT MONDAVI WINERY 1975 (1)**

Napa Valley

Zinfandel

8 BTS. *Estimate \$670 – \$1,117*

- 222 ROSENBLUM 1994** (2)  
 Contra Costa County  
 Zinfandel  
**ROSENBLUM 1995** (2)  
 Contra Costa County  
 Zinfandel  
**SANTA CRUZ MOUNTAIN 1990** (2)  
 Bates Ranch  
 Cabernet Sauvignon  
 1 bt. - TS Stained Label  
**SCHRAMSBERG 1998** (1)  
 Blanc De Blancs  
 White
- 7 BTS. *Estimate \$436 – \$726*
- 223 SEAVEY 1994** (5)  
 Napa Valley  
 Cabernet Sauvignon  
**SEAVEY 1996** (1)  
 Napa Valley  
 Cabernet Sauvignon
- 6 BTS. *Estimate \$1,374 – \$2,290*
- 224 SILVER OAK 1994** (1 d. mag.)  
 Napa Valley  
 Cabernet Sauvignon
- RP = 93
- 1 D. MAG. *Estimate \$971 – \$1,619*

- 225 SHAFER 2000** (1)  
 Red Shoulder Ranch  
 Chardonnay  
**SILVER OAK 1995** (2)  
 Napa Valley  
 Cabernet Sauvignon  
**SILVER OAK 1991** (2)  
 Napa Valley  
 Cabernet Sauvignon
- 5 BTS. *Estimate \$1,087 – \$1,811*
- 226 TRAUlsen 1995** (3)  
 Sonoma County  
 Monte Rosso Vineyard  
 Zinfandel  
**TURLEY 1996** (1)  
 Old Vines  
 Zinfandel  
**WHITEHALL LANE 1995** (3)  
 Napa Valley  
 Merlot  
**STE. CHAPELLE 1983** (1)  
 Ste. Chapelle  
 Cabernet Sauvignon
- 8 BTS. *Estimate \$766 – \$1,277*



# Toronto Symphony Volunteer Committee

2019 FINE WINE AUCTION COMMITTEE

**President, TSVC:**

Andrea Alexander

**Past President, TSVC:**

Joanne Colbourne

**Vice-President, TSVC,****Fine Wine Auction:**

Marlene Lynds

**General Manager, TSVC:**

Linda McGeown

**Co-Chairs:**

Frank Au and Mary Shannon

**Treasurer, TSVC:**

Susan Davies

**Acquisitions, Inventory Control,  
and Lotting:**

Linda McGeown

**Wine Club Communication:**

Jason Kinnear and Linda McGeown

**Wine Pick-ups:**

Olga Fershaloff, Roberta Innes,

Linda McGeown, Alan Silverstein

**Public Relations Consultant:**

Kathy Buckworth

**Marketing and Website:**

Linda McGeown

**Social Media:**

Linda McGeown

**Catalogue:**

Linda McGeown and Thao Nguyen

**Catalogue Proofreaders:**

Andrea Alexander, Frank Au,

Linda McGeown, Thao Nguyen,

Mary Shannon

**Event Decor:**

Barbara Trull

**Volunteer Coordinator:**

Sandra Gopaul

**Catalogue Production:****Photography by**

Kevin Hewitt

Kevin Hewitt Photography Inc.

**Design and Layout by**

Patrick Lucero

Whistle Creations

**Wine Lotting by**

Iron Gate - Private Wine Management

**Wine Cataloguing Review by**

Linda McGeown, Robert Jull

and Patrick Lucero

**Produced by**

Linda McGeown

**Printed by**

Andora Graphics, FSC® certified.

The Forest Stewardship Council® is an independent not for profit organization that promotes responsible forest management worldwide. For more information, visit [andoragraphics.com](http://andoragraphics.com).

A project like the TSO Fine Wine Auction is only possible with the help of  
a dedicated volunteer committee and gracious supporters.

**We would like to thank all committee members:**

Frank Au, Joanne Colbourne, Susan Davies, Olga Fershaloff, Sandra Gopaul, Roberta Innes, Jason Kinnear, Nicole Liphardt, Marlene Lynds, Linda McGeown, Liz Nichol, Thao Nguyen, Marianne Oundjian, Lindsay Rose-McLean, Laurie Sakamoto, Mary Shannon, Barbara Trull, Debra Walker, and the volunteers who contributed time and effort on the day of the auction.

Special thanks to the musicians of the Rostra Saxophone Quartet (Samantha Etchegary, Lucas MacPhail, Olivia Shortt, Jennifer Tran) for providing outstanding entertainment at the reception.

We gratefully acknowledge the support of: Toronto Vintners Club, The Wine Academy, and The Vintage Conservatory.

## Bidding Procedure and Collecting Your Wine

The highest bidder acknowledged by the auctioneer shall be the buyer. The auctioneer has the right to reject any bid and to advance the bidding at his absolute discretion and, in the event of any dispute between the bidders, to determine the successful bidder or to re-offer and re-sell the item in dispute. Should there be any dispute after the sale, the auction's record of final sale shall be conclusive.

The bidding increments in this auction will be determined by the auctioneer. (See below for Bidding Increments.) Any commission bids received that are not at the proper increments will be reduced to the next lowest increment. The auctioneer may change bidding increments at his discretion.

**Payment for your successful bids must be made by cash or credit card by Wednesday, November 20, 2019.**

### INFORMATION FOR PROSPECTIVE BIDDERS

---

If this is your first time at a wine auction, the procedure is quite straight forward. After registering, you will be given a numbered paddle. To bid, simply raise your paddle until the bidding reaches your spending limit. **Bids will not be subject to HST or a buyer's premium.** If you have any questions about bidding, ask a member of the Toronto Symphony Volunteer Committee or staff in attendance at the auction.

### BIDDING INCREMENTS

---

Bidding generally opens below the low estimate and advances in increments of up to 10%, subject to the auctioneer's discretion. Absentee bids that do not conform to the increments set below may be lowered to the next bidding interval.

\$0 to \$100	by \$5
\$100 to \$200	by \$10
\$200 to \$300	by \$20
\$300 to \$500	by \$25
\$500 to \$1,000	by \$50
\$2,000 to \$3,000	by \$200
\$3,000 to \$5,000	by \$250
\$5,000 to \$10,000	by \$500

*The auctioneer may vary the increments during the course of the auction at his discretion.*

*All prices in Canadian funds.*

### COLLECTING YOUR WINE

---

Iron Gate Private Wine Management is the official storage facility of the 2019 Toronto Symphony Orchestra Fine Wine Auction and is also responsible for inventory management and delivery to the final purchasers.

**Wines will be made available from Friday, 10AM on November 22, 2019.** No wine auction lots will be released unless the purchase price has been paid in full.

Our open hours for pick up: **Monday to Friday, 10AM to 5PM.**  
We are also open on **Saturday, December 14, 2019 – 11AM to 3PM.**

The office address is **51 Laird Drive, Toronto, ON, M4G 3T4.** There is parking available at the back door of the building. **An appointment is required for pickup.**  
**Please kindly book an appointment at least one day in advance.**  
**Please contact Irina Omari at 416-234-9500 ext. 712 OR email [Irina@IronGate.Wine](mailto:Irina@IronGate.Wine) to make arrangements for pick-up.**

If you wish to arrange the delivery of your wine purchase through your own courier account (i.e. Messenger or FedEx), your wine purchase can be picked up by the courier service at Iron Gate's office. Please provide Iron Gate with confirmation of an appointment of when the wines will be picked up at least one day in advance.

## TSO Fine Wine Auction Absentee Bid Form

**DEADLINE FOR ABSENTEE BIDS IS 12:00 P.M. EST. WEDNESDAY, NOVEMBER 6, 2019**

Name (Please Print) \_\_\_\_\_  
Street \_\_\_\_\_  
Town/City \_\_\_\_\_  
Province \_\_\_\_\_ Postal Code \_\_\_\_\_  
Phone (Bus.) \_\_\_\_\_ (Res.) \_\_\_\_\_  
(Fax) \_\_\_\_\_  
Email \_\_\_\_\_  
Charge to: ☐ Visa ☐ Mastercard ☐ Amex  
Card No. \_\_\_\_\_  
Expiry Date \_\_\_\_\_  
Name on Card \_\_\_\_\_  
Valid Signature \_\_\_\_\_

To submit your bids, please also complete  
the Absentee Bid Order Form on page 58.

### **TELEPHONE BIDDING**

If this is a telephone bidding request, please check here: ☐  
Auction time telephone number: \_\_\_\_\_

*(where you can be contacted during the auction)*

**TSO auction staff will phone you prior  
to your lot coming up for auction.**

Please complete the Absentee Bid Order Form  
on page 62 for all telephone bidding requests.

Bids are to be executed up to but not exceeding the amount  
or amounts specified below. Each bid is PER LOT as indicated,  
and all bids will be executed and are accepted subject to the  
“Conditions of Sale” printed in this catalogue.

I hereby submit the following bids. I would like to limit the  
total that I spend to \$\_\_\_\_\_. I hereby authorize  
you to stop my bids after that amount has been reached in  
successful bids. I list all my bids in sequential catalogue order.  
I understand that I will be informed of any successful bids  
prior to Wednesday, November 20, 2019.

I acknowledge that the wine purchased at the auction may not  
have been tested by the Liquor Control Board of Ontario.

Signature \_\_\_\_\_ Date \_\_\_\_\_

Send to:

Toronto Symphony Volunteer Committee  
Attn: Linda McGeown  
500-145 Wellington St. W.  
Toronto, Ontario M5J 1H8  
Phone: 416-593-7769 ext. 359 Fax: 416-591-0213  
Email: lmcgeown@tso.ca



## Absentee Bid Order Form

[illegible]

## Terms and Conditions of Sale

The wines listed in this catalogue, as may be amended by sale room notice or announcement, are being offered for sale by the Toronto Symphony Orchestra and the Toronto Symphony Volunteer Committee for its own account. These Terms and Conditions of Sale constitute the complete terms and conditions on which all of the wines and related items will be offered for sale.

### REGISTRATION

---

Buyers must register before the start of auction bidding. If you are bidding in person, bidding at the auction will be by paddle only. Paddle registration is free and will be available at the TSO Fine Wine Auction from 5:30 p.m. local Toronto time until the end of the auction, Thursday, November 7, 2019. Pre-registration is strongly advised to expedite paddle pick-up. To pre-register, please visit [tsvc.ca/fine-wine-auction](http://tsvc.ca/fine-wine-auction) or contact Linda McGeown at 416-593-7769 ext. 359. Buyers who have pre-registered must still collect their paddles in order to bid. Credit card information will be requested on registration.

### ABSENTEE BIDS

---

Prospective buyers are advised to attend the auction. However, bids will be accepted and executed if received in advance of the auction by mail, email or fax at the offices of the Toronto Symphony Volunteer Committee no later than 12:00 p.m. local Toronto time, Wednesday, November 6, 2019. Absentee bidders are kindly requested to complete the absentee bidding form at the back of the catalogue. Credit card information will be requested and validated. Commission bids submitted to the TSO Fine Wine Auction in writing or otherwise left with the TSO Fine Wine Auction prior to the auction for execution at or below a specified price, will be vetted and executed by the auctioneer for the convenience of bidders. The Toronto Symphony Orchestra and the Toronto Symphony Volunteer Committee shall not be responsible for failing to execute such bids or for errors relating to the execution of such bids or following any other instructions of any commission bidder. At the request of the commission bidder, the auctioneer will limit overall expenditures in the auction to a predetermined limit communicated to the auctioneer by the commission bidder. If such a request is made, the auctioneer will stop bidding on new lots as soon as the commission bidder reaches the predetermined limit in successful bids. In the event that received commission bids on a lot are for identical amounts and at auction those commission bids are the highest bids for that lot, the lot shall be knocked down to the person whose commission bid (for the relevant amount) was received first.

### TELEPHONE BIDDING

---

If you cannot attend the auction, you may bid by telephone during the auction by completing the absentee bid form at the back of the catalogue. Arrangements for this must be made in advance of the auction. Your request for a reservation for telephone bidding must be received in advance of the auction, by no later than 12:00 p.m. local Toronto time, Wednesday, November 6, 2019. A representative of the auction will acknowledge your request for telephone bidding. Credit card information will be requested and validated.

Any failure to execute bids or any mistake in doing so cannot be the responsibility of the auctioneer, the Toronto Symphony Orchestra or of the Toronto Symphony Volunteer Committee or its staff or members.

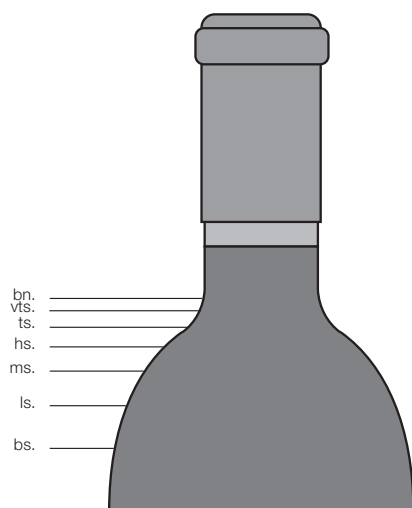
### CONDITIONS OF THE WINE

---

All wine sold at the sale shall be at the buyer's risk. The Toronto Symphony Orchestra and the Toronto Symphony Volunteer Committee sells all wine exactly as it is and gives no warranty of any kind as to any of the wine, nor shall they be liable in any manner for any error in description, faults, or defects. All warranties and conditions implied by law are hereby excluded. No person shall have recourse against the Toronto Symphony Orchestra or the Toronto Symphony Volunteer Committee for any irregularity or illegality in the sales, or in the conduct of the sale, or of the wine. All wine donations for this auction have been professionally stored at the proper temperature and humidity at an off-site facility. The wine offered for sale at the Auction may not have been tested by the Liquor Control Board of Ontario. The purchaser of the wine by way of the auction is required by law to acknowledge in writing that the wine may not have been tested by the Liquor Control Board of Ontario. The form for this acknowledgment will be available for signature on registration.



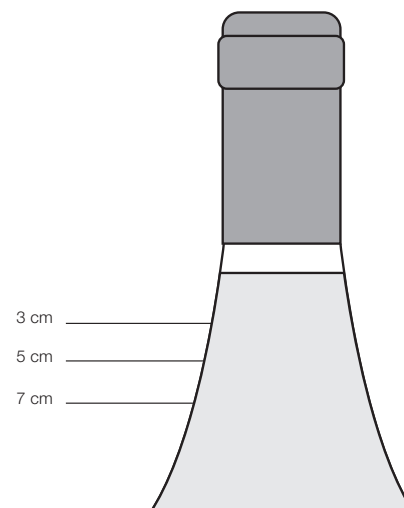
## Level/Ullage Description and Interpretations



### BORDEAUX LEVELS

For wines in bottles with defined shoulders including Bordeaux, Port and other wines, the level is measured and catalogued as follows:

- bn. **BASE NECK:** Perfectly good for any age of wine.  
Outstandingly good for a wine of 10 years in bottle, or longer.
- vts. **VERY TOP SHOULDER**
- ts. **TOP SHOULDER:** Normal for any Bordeaux 15 years old or older.
- hs. **HIGH SHOULDER:** Slight natural reduction through the easing of the cork and evaporation through cork and capsule. Usually no problem. Acceptable for any wine over 20 years old. Exceptional for pre-1950 wines.
- ms. **MID SHOULDER:** Probably some weakening of the cork and some risk. Not abnormal for wines 30-40 years of age. Estimates usually take this into account.
- ls. **LOW SHOULDER:** Risky and usually only accepted for sale if wine or label exceptionally rare or interesting. Always offered with low estimate.
- bs. **BOTTOM SHOULDER:** Not acceptable for sale unless a rare sort of bottle. Wine will usually be undrinkable.
- u. **ULLAGE:** Level.  
*Example: (u. 2ts) means 2 bottles ullaged to top shoulder.*
- oc. **ORIGINAL CARTON**
- owc. **ORIGINAL WOODEN CASE**
- RC **RESERVE CHÂTEAU**



### BURGUNDY LEVELS

For wines in bottles with sloping necks, including Burgundy, German and other wines, the level between the cork and wine is measured and catalogued in centimetres.

The condition and drinkability of Burgundy is less affected by ullage than its equivalent from Bordeaux. A 5-7-cm. ullage in a 50-year-old Burgundy can be considered normal, indeed good for age; 3.5-4 cm. excellent for age; 7 cm. rarely a risk.

*Example: (u. 3x5cm) means 3 bottles ullaged 5 cm.*

### BOTTLE SIZES

- hf. bt. **HALF BOTTLE** = 0.375 litres
- bt(s). **BOTTLE(S)** = 0.75 litres
- ltr. **LITRE**
- mag. **MAGNUM** = 1.5 litres, or two regular bottles
- d. mag. **DOUBLE MAGNUM** (Bordeaux, Port) = 3 litres
- jero. **JEROBOAM** (Burgundy, Champagne) = 3 litres
- jero. **JEROBOAM** (Bordeaux) = 5 litres\*
- imp. **IMPÉRIALE** (Bordeaux) = 6 litres
- meth. **METHUSELAH** (Burgundy, Champagne) = 6 litres
- salm. **SALMANAZAR** = 9 litres

*\*Up to 1978, jeroboams were generally bottled in 4.5-ltr. bottles.*

### TASTING NOTE SOURCES

AM - Allen Meadows CC - Clive Coates  
IWC - International Wine Cellar RP - Robert Parker  
WA - Wine Advocate WS - Wine Spectator VM - Vinous Media



## UPCOMING AUCTIONS

### **Fine Wine**

NOVEMBER 25 - DECEMBER 3

### **Fine Spirits**

NOVEMBER 25 - DECEMBER 3

**The McCarthy and Boyd  
Collections of Fine Scotch Whisky**  
NOVEMBER 25 - DECEMBER 3

Under the Authority of the LCBO

### **Canadian Fine Art**

MONDAY, NOVEMBER 18

### **Inuit Art**

TUESDAY, NOVEMBER 19

### **International Art**

NOVEMBER 23 - 28

### **Decorative Arts & Design**

NOVEMBER 23 - 28

### **Asian Art**

NOVEMBER 30 - DECEMBER 5

### **Fine Jewellery & Watches**

MONDAY, DECEMBER 2

275 King Street East, 2<sup>nd</sup> Floor  
Toronto, Ontario Canada M5A 1K2

[www.waddingtons.ca](http://www.waddingtons.ca)



**waddington's**



PRIVATE WINE MANAGEMENT  
Wine Collection Sales, Storage & Services

## STORAGE

Iron Gate operates three high security and temperature controlled vaults in Leaside, Vaughan and Buffalo, NY. With over 150,000 bottles in our care, we are the largest provider of fine wine storage in Canada and have been operating for over 15 years.

## CELLARCARE®

We offer a complete online inventory system for your home cellar that tracks bottle location, retail and historical value, tasting notes, and ratings.

## INVENTORY

Our trained professionals can catalogue your entire collection quickly in order to get your cellar running efficiently and on the right track.

## APPRAISALS

Know the value of your collection for insurance, divorce or estate purposes. This can include digital photography for complete insurance coverage.

## SELLING

Collectors sell or pare down for many reasons. Sometimes it's an entire collection for health, divorce, estate or liquidity issues; but most of the time, it's to pare down a collection that has been built up over a lifetime.

The challenge in Canada has been the lack of a secondary retail market to guarantee a fixed price for your wine, without risk. Iron Gate has changed all that by launching IronGate.Wine; a US-based retail entity under NY State Liquor License #G848717.

Through our US company, Canadian clients have the ability to sell or consign their collections to a network of buyers throughout the US and around the world. Simply contact us with an inventory of what you would like to sell and we'll provide you with a fixed dollar figure for your consideration.

---

Please contact us to determine which avenue is best for your unique situation.

---

*Official Storage and Services Provider to  
the Toronto Symphony Fine Wine Auction.*

[www.irongatewine.com](http://www.irongatewine.com)

[www.irongate.wine](http://www.irongate.wine)







# Keeping the arts within reach



At CIBC, we care about nurturing and educating Canada's children and young adults so they can build a better future.

As the arts play a key role in childhood development, CIBC is proud to support Toronto Symphony Orchestra Fine Wine Auction, benefitting TSO programmes for performing arts and educational initiatives for young artists and schools across Canada.





Toronto  
Symphony  
Orchestra

# VIVALDI'S FOUR SEASONS

NOV 16, 17, 20 & 21

Hear Concertmaster Jonathan Crow  
lead the Orchestra in one of classical  
music's most iconic pieces.



# AN AMERICAN IN PARIS

NOV 22 & 23

An all-American program of  
20th-century masterworks  
including Gershwin's jazzy  
musical postcard, Samuel  
Barber's Piano Concerto, and  
Bernstein's overture to *Candide*.



**Tickets selling fast—order now to secure your seats!**

**416.593.1285 TSO.CA**



SEASON PRESENTING SPONSOR







**Proceeds from the TSO Fine Wine Auction support**

THE TORONTO SYMPHONY ORCHESTRA, ITS SCHOOL AND COMMUNITY PROGRAMS,  
AND TUITION-FREE ENROLLMENT FOR THE TORONTO SYMPHONY YOUTH ORCHESTRA.